

KINNISVARA  
EKSPERT



KINNISVARA  
EKSPERT



KINNISVARA  
EKSPERT



KINNISVARA  
EKSPERT



## For sale apartment KASESALU 6

 Harju maakond, Saue vald, Ääsmäe küla

An apartment with open views of the morning and evening sun!



PEETER NURM

☎ +3725028967

☎ +3726556544

✉ peeter.nurm@kinnisvaraekspert.ee

3	3/3	65.3 m <sup>2</sup>	115 000 €
rooms	floor	total area	1 761.10 € / m <sup>2</sup>

ID	150496
Rooms	3
Total area	65.3 m <sup>2</sup>
Form of ownership	apartment ownership
Condition	renovated
Year of construction	1980
Floor	3/3
Building material	panel
Cadastral register number:	<u>72704:002:0065</u>

Price range **115 000 €**

Price per m2 **1 761.10 €**



## PEETER NURM

Board member of Kinnisvarakspert Staaring OÜ, professional senior broker, level 6, member of Estonian Chamber of Estate Agents. Real estate broker reg. no.: KMR 65570  
 📞 +3725028967  
 📞 +3726556544  
 ✉️ peeter.nurm@kinnisvaraekspert.ee

## Additional data

õhksoojuspump, balconi, basement, bath, boiler, cable TV, coatroom, electricity, fireplace, furniture change possibility, internet, parquet, refrigerator, secured door, shower, water, kitchen furniture, open kitchen, new sewerage, new electric circuit, wall cupboard, central water, city transport, storage room electric stove, electric floor heating, combined heating

## Additional information

This spacious and bright three-room apartment is located in Saue municipality, Ääsmäe village, on the third floor of a three-story building. The apartment has a through-layout – enjoy the morning sun on one side and the evening sun on the other, ensuring natural light and a cozy atmosphere throughout the day.

Advantages of the apartment and location:

Renovated – modern and fresh interior design.

Through-layout – open and bright spaces.

Air-source heat pump – energy efficiency class A, well-maintained.

Fireplace – usage permitted (inspection date: 09.11.2024).

Housing association – monthly expenses approximately €100 year-round, plus electricity.

Hot water and underfloor heating solution – a 150-liter electric boiler and electric underfloor heating in the bathroom.

Large storage room in the basement – perfect for additional storage (usage based on a verbal agreement).

Convenient parking – free parking space right in front of the building.

Excellent location for families – close to a school, kindergarten, grocery store, and sports facilities.

Surrounded by nature – nearby health and sports trails ideal for walks and active leisure.

An ideal home for those who value peace and proximity to nature but still want to be very close to Tallinn. Come and see for yourself – this apartment could be your new home!

\*\*\*\*

KINNISVARAEKSPERT has been operating on the Estonian market since 1993. Our offices are located in Tallinn and Pärnu, and we serve you all over Estonia. Through cooperation partners Nord Prime Capital and Alliance Group UAB, we are also represented in Latvia and Lithuania.

We offer brokerage services, valuation and real estate advisory services in both the private and commercial sectors.

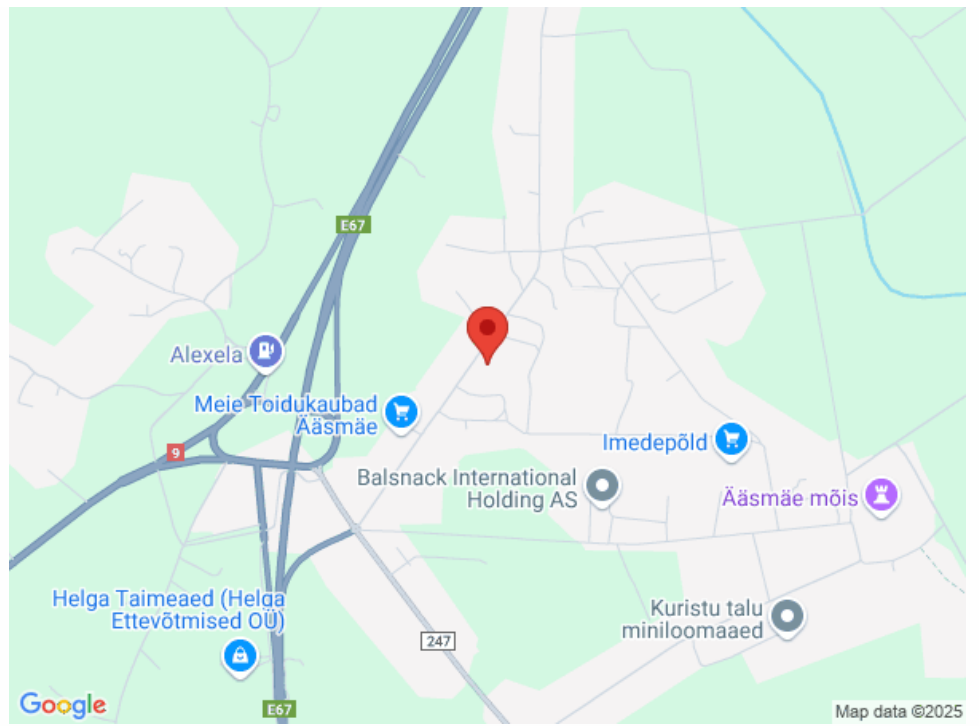
Kinnisvarekspert works closely with one of the world's largest real estate companies, Cushman & Wakefield. Our cooperation spans all over the world.

You can find more information at <http://www.kinnisvaraekspert.ee>

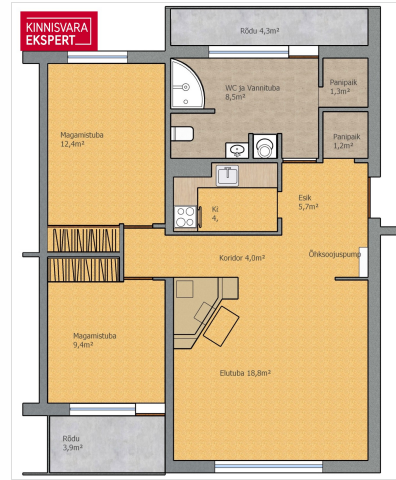
\*\*\*\*

## Location

📍 Harju maakond, Saue vald, Ääsmäe küla











KINNISVARA  
EKSPERT



KINNISVARA  
EKSPERT



KINNISVARA  
EKSPERT



KINNISVARA  
EKSPERT



KINNISVARA  
EKSPERT



KINNISVARA  
EKSPERT



KINNISVARA  
EKSPERT



KINNISVARA  
EKSPERT







KINNISVARA  
EKSPERT



KINNISVARA  
EKSPERT



KINNISVARA  
EKSPERT



KINNISVARA  
EKSPERT

