



## Rent service METSÄ TEE 1

📍 Harju maakond, Jõelähtme vald, Iru küla

LOGISTILISELT HEA ASUKOHT JA MADALAD KÕRVALKULUD



KATRIN KURM

☎ +3725026897

☎ +3726264250

✉ [katrin.kurm@kinnisvaraekspert.ee](mailto:katrin.kurm@kinnisvaraekspert.ee)

1/2	456.2 m <sup>2</sup>	10161 m <sup>2</sup>	3790 € + km
floor	total area	plot	8.31 € / m <sup>2</sup>

ID	148967
Total area	456.2 m <sup>2</sup>
Plot	10161 m <sup>2</sup>
Form of ownership	immovable
Condition	new building
Year of construction	2024
Floor	1/2
Building material	monolithic
Cadastral register number:	<u>24501:001:2319</u>
Price range	<b>3 790 € +km</b>
Price per m2	<b>8.31 €</b>



## KATRIN KURM

Head of commercial service  
member of Estonian Chamber of Estate Agents.  
Real estate broker reg. no.: KMR 89425

+3725026897

+3726264250

✉ [katrin.kurm@kinnisvaraekspert.ee](mailto:katrin.kurm@kinnisvaraekspert.ee)

## Additional data

alarm, electricity, gas stove, internet, ventilation, water, new sewerage, separate entrance, central water, city transport, shop window, street entrance, local gas heating

## Additional information

\*\*\*\*

KINNISVARAEKSPERT has been operating on the Estonian market since 1993. Our offices are located in Tallinn and Pärnu, and we serve you all over Estonia. Through cooperation partners Nord Prime Capital and Alliance Group UAB, we are also represented in Latvia and Lithuania.

We offer brokerage services, valuation and real estate advisory services in both the private and commercial sectors.

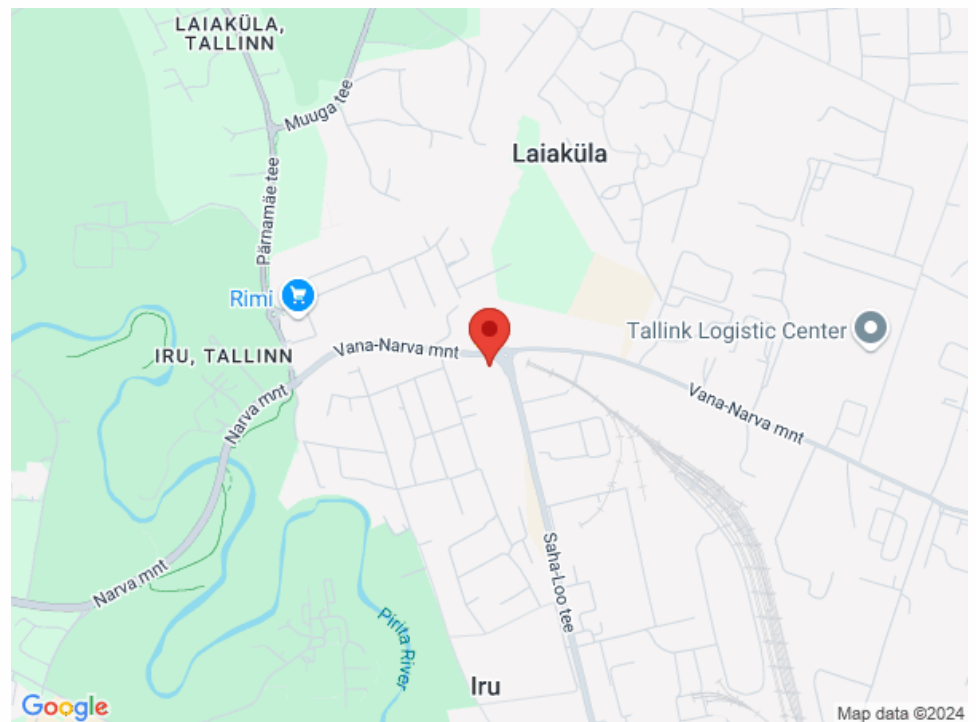
Kinnisvarekspert works closely with one of the world's largest real estate companies, Cushman & Wakefield. Our cooperation spans all over the world.

You can find more information at <http://www.kinnisvaraekspert.ee>

\*\*\*\*

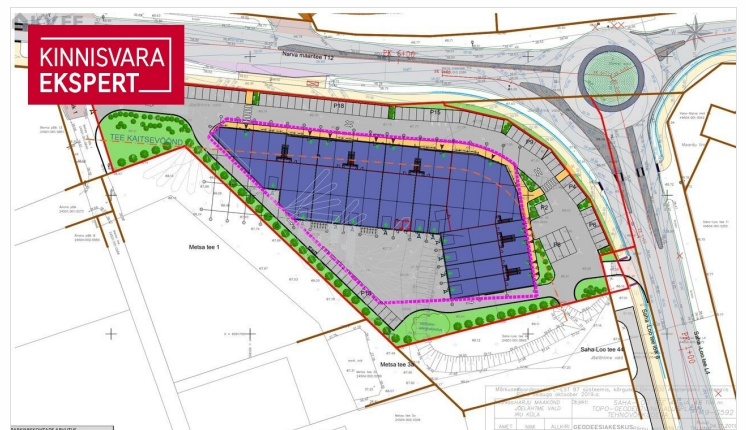
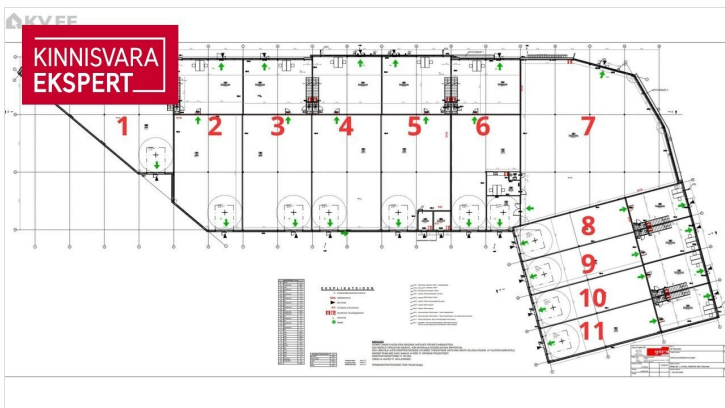
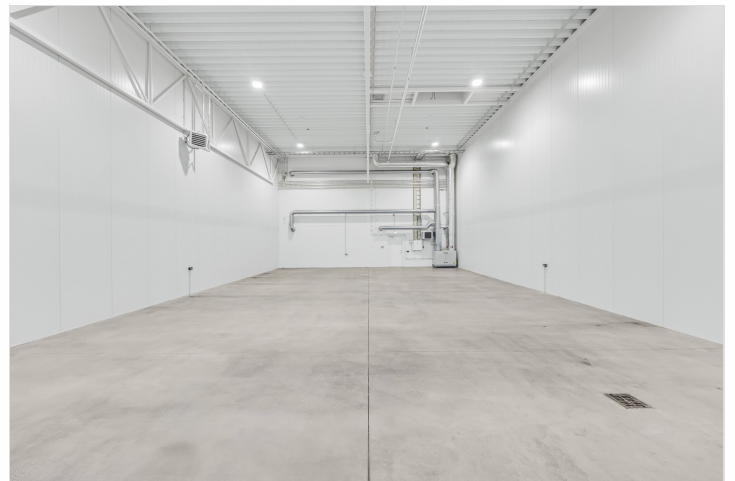
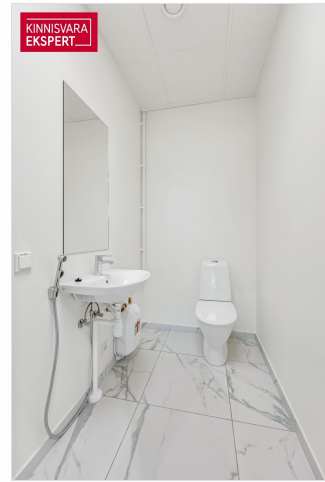
## Location

📍 Harju maakond, Jõelähtme vald, Iru küla









**KINNISVARA EKSPERT**

**Sinu kinnisvara-partner**

**Katrin Kurm**  
+372 502 6897  
katrin.kurm@kinnisvaraekspert.ee

**KINNISVARA EKSPERT**