

## For sale apartment SEEBI 1

📍 Harju maakond, Tallinn, Kristiine linnaosa

An apartment with panoramic views, including a parking space!



PEETER NURM

☎ +3725028967

☎ +3726556544

✉ peeter.nurm@kinnisvaraekspert.ee

2	8/20	45.5 m <sup>2</sup>	194 000 €
rooms	floor	total area	4 263.74 € / m <sup>2</sup>

ID	150950
Rooms	2
Total area	45.5 m <sup>2</sup>
Form of ownership	apartment ownership
Condition	new building
Year of construction	2021
Floor	8/20
Building material	panel
Cadastral register number:	<u>78401:101:3428</u>
<b>Price range</b>	<b>194 000 €</b>
<b>Price per m2</b>	<b>4 263.74 €</b>



## PEETER NURM

Board member of Kinnisvarakspert Staaring OÜ, professional senior broker, level 6, member of Estonian Chamber of Estate Agents. Real estate broker reg. no.: KMR 65570  
 📞 +3725028967  
 📞 +3726556544  
 ✉️ peeter.nurm@kinnisvaraekspert.ee

## Additional data

cable TV, coatroom, electricity, elevator, furniture, garage, internet, locked staircase, parquet, refrigerator, secured door, shower, TV, washing machine, water, kitchen furniture, open kitchen, new sewerage, new electric circuit, central water, city transport, central heating, water floor

## Additional information

Discover the Secrets of Urban Living

For sale: a stylish 2-room apartment with panoramic views, located in a high-rise built by OÜ Endover in 2021 on Seebi Street. The property includes a heated parking space in the underground garage.

The TORN (Tower) high-rise is a unique, high-quality, modern 20-story residential and commercial building situated in the greenery of Kristiine, on the edge of Tallinn's city center. The location is quiet, away from direct traffic noise, and the building boasts an active apartment association.

The apartment features an entryway, a WC/shower room, a spacious open-plan kitchen-living room, and a bedroom. It is fully furnished and equipped, with all furniture and appliances included in the sale. The apartment is in excellent condition and has not been permanently occupied.

Comfort is ensured by individual apartment ventilation systems and high-quality windows with excellent thermal insulation. The flooring is finished with natural wooden parquet and features water-based underfloor heating, while the WC/bathroom has ceramic tiles. Room temperatures can be adjusted separately.

The kitchen is equipped with high-quality furniture and appliances, including a stove, integrated dishwasher, refrigerator, range hood, oven, and microwave. The WC/shower room includes a washing machine. The living room features a comfortable corner sofa bed, a coffee table, and a TV with a stand. The bedroom includes a bed, two bedside tables, and a wardrobe.

Additional amenities include a video intercom system.

Utility costs are reasonable year-round: approximately €110 in summer and €240 in winter, depending on usage.

Residents of the sixth floor enjoy a variety of leisure facilities, including a 300 m<sup>2</sup> sun terrace with table tennis, a children's playground, and Horizon Club party rooms with a kitchenette and sauna complex. There is also a small gym on the first floor available for residents to use at their convenience.

The building has a double-height, designer lounge-style lobby area.

Street parking is free, and secure outdoor and indoor bicycle parking is available.

Located in one of the best areas of the city, the apartment is on the border of the city center. Nearby are schools and kindergartens, such as Kristiine Kindergarten and Audentese Private School (about 5 minutes away), as well as the FORUS sports club (Tere Tennis Center/Golden Club), A. Le Coq Arena with its large stadium, and Audentese Sports Hall. The area also features playgrounds and parklands, perfect for evening strolls, running, or spending quality time with children.

Public transport connections are excellent, with Tondi bus stops (buses 23 and 28), tram stops (lines 3 and 4), and a train station just a few minutes away, providing easy access to all city districts and shopping centers (Tondi Selver, Kristiine Keskus, Järve Keskus, etc.).

If you think this could be your new home, contact me, and let's schedule a viewing!

\*\*\*\*

KINNISVARAEKSPERT has been operating on the Estonian market since 1993. Our offices are located in Tallinn and Pärnu, and we serve you all over Estonia. Through cooperation partners Nord Prime Capital and Alliance Group UAB, we are also represented in Latvia and Lithuania.

We offer brokerage services, valuation and real estate advisory services in both the private and commercial sectors.

Kinnisvarekspert works closely with one of the world's largest real estate companies, Cushman & Wakefield. Our cooperation spans all over the world.

You can find more information at <http://www.kinnisvaraekspert.ee>

\*\*\*\*

## Location

📍 Harju maakond, Tallinn, Kristiine linnaosa



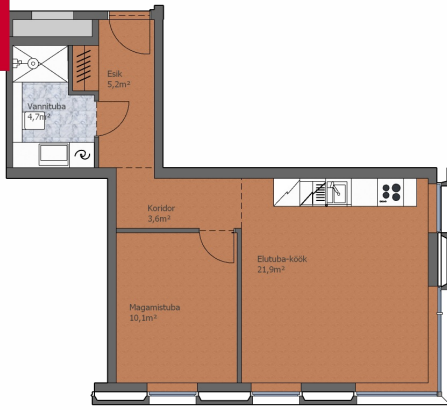








KINNISVARA  
EKSPERT



KINNISVARA  
EKSPERT



KINNISVARA  
EKSPERT



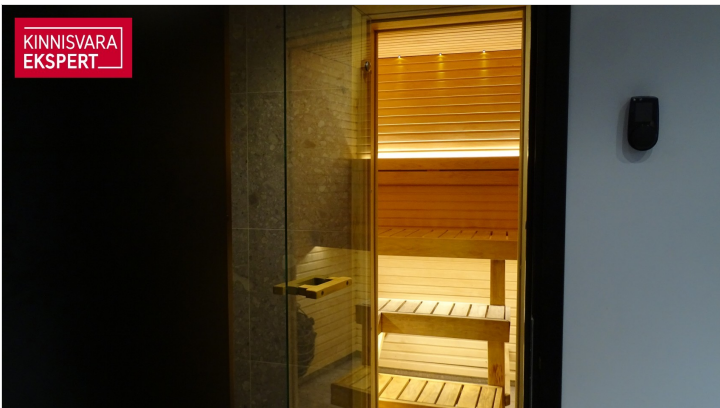
KINNISVARA  
EKSPERT



KINNISVARA  
EKSPERT



KINNISVARA  
EKSPERT



KINNISVARA  
EKSPERT









