

KINNISVARA  
EKSPERT



KINNISVARA  
EKSPERT



KINNISVARA  
EKSPERT



KINNISVARA  
EKSPERT



## Rent trade UUS-SADAMA 25

📍 Harju maakond, Tallinn, Kesklinna linnaosa



MEELIS PÄEREN

☎ +3725652277

☎ +3726264250

✉ meelis.paeren@kinnisvaraekspert.ee

1/4  
floor

577 m<sup>2</sup>  
total area

5 770 € +km  
10.00 € / m<sup>2</sup>

ID	150803
Total area	577 m <sup>2</sup>
Form of ownership	apartment ownership
Condition	completed
Floor	1/4
Building material	monolithic
Cadastral register number:	<u>78401:114:1920</u>
<b>Price range</b>	<b>5 770 € +km</b>
<b>Price per m2</b>	<b>10.00 €</b>



## MEELIS PÄEREN

Professional broker level 5, commercial property  
Real estate broker reg. no.: KMR 61822

+3725652277

+3726264250

meelis.paeren@kinnisvaraekspert.ee

## Additional data

alarm, electricity, industrial electricity, water, separate entrance, shop window, street entrance, trestle, central heating

## Additional information

\*\*\*\*

KINNISVARAEKSPERT has been operating on the Estonian market since 1993. Our offices are located in Tallinn and Pärnu, and we serve you all over Estonia. Through cooperation partners Nord Prime Capital and Alliance Group UAB, we are also represented in Latvia and Lithuania.

We offer brokerage services, valuation and real estate advisory services in both the private and commercial sectors.

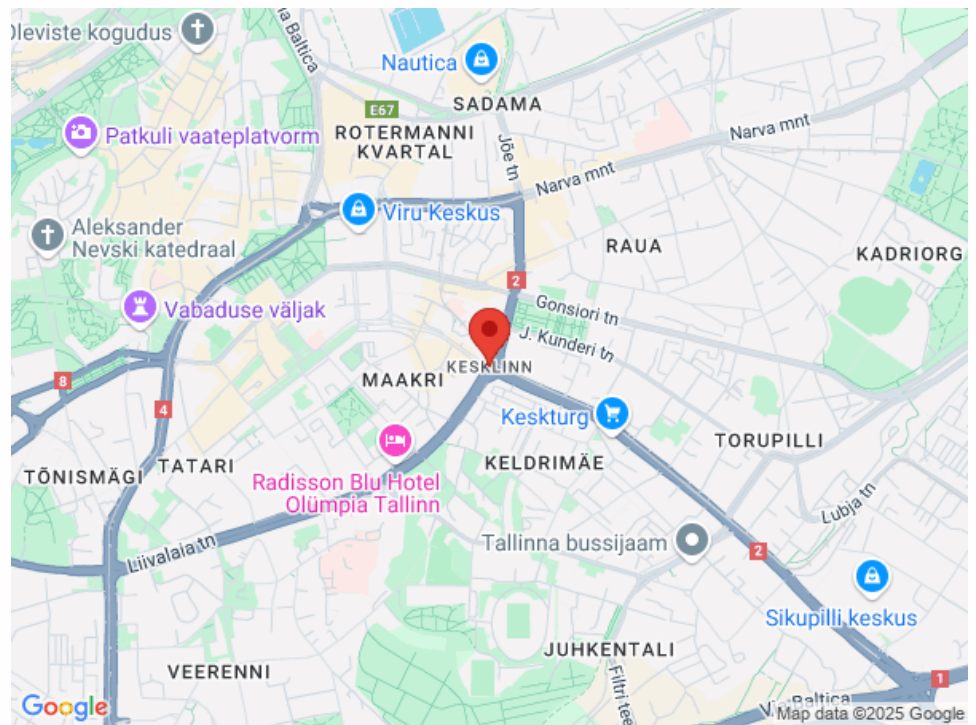
Kinnisvaraekspert works closely with one of the world's largest real estate companies, Cushman & Wakefield. Our cooperation spans all over the world.

You can find more information at <http://www.kinnisvaraekspert.ee>

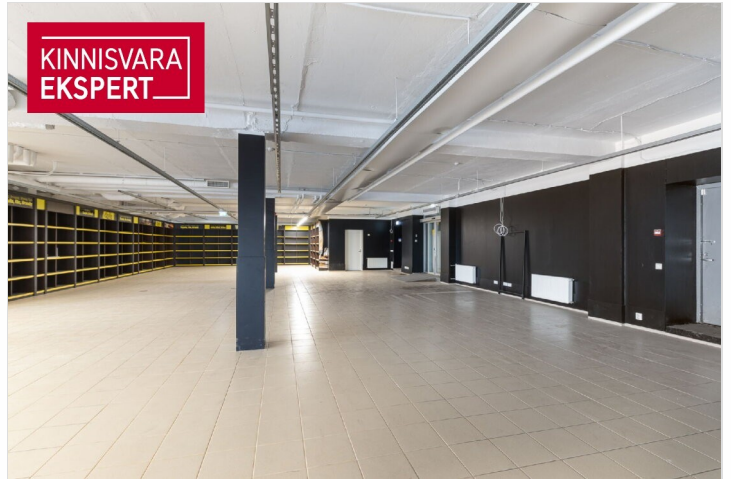
\*\*\*\*

## Location

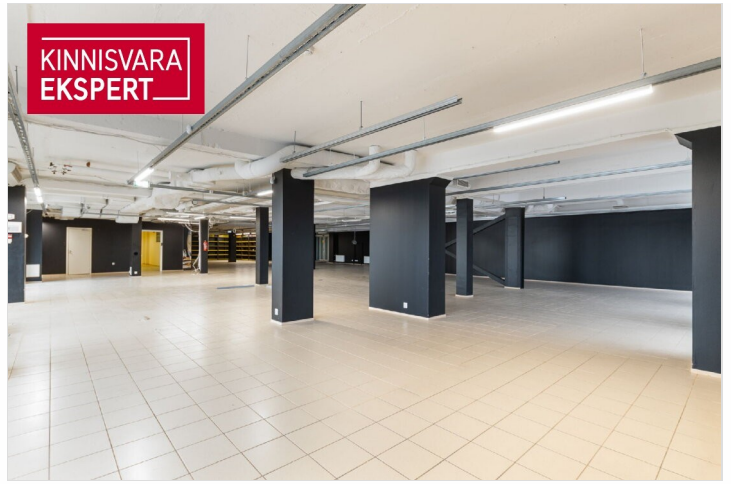
📍Harju maakond, Tallinn, Kesklinna linnaosa













**KINNISVARA EKSPERT**

Sinu kinnisvara-partner

**Katrin Kurm**  
+372 502 6897  
katrin.kurm@kinnisvaraekspert.ee