

KINNISVARA  
EKSPERT



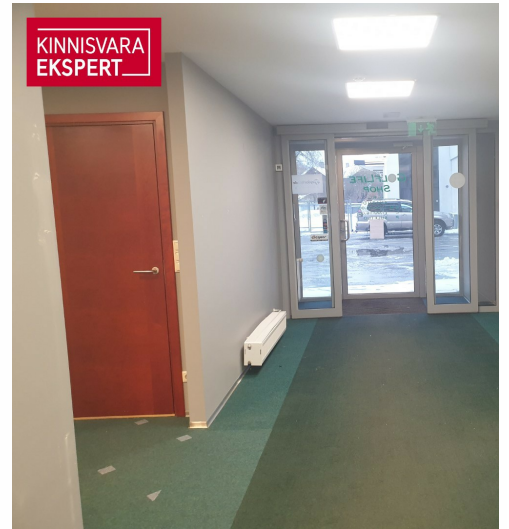
KINNISVARA  
EKSPERT



KINNISVARA  
EKSPERT



KINNISVARA  
EKSPERT



# Rent bureau TOOMPIESTEE 33A

📍 Harju maakond, Tallinn, Põhja-Tallinna linnaosa

Unique office space for rent in a great location!



KATRIN KURM

☎ +3725026897

☎ +3726264250

✉ [katrin.kurm@kinnisvaraekspert.ee](mailto:katrin.kurm@kinnisvaraekspert.ee)

5 rooms	1/7 floor	330 m <sup>2</sup> total area	7429 m <sup>2</sup> plot	3 300 € + km 10.00 € / m <sup>2</sup>
------------	--------------	----------------------------------	-----------------------------	--

ID	143366
Ruume	5
Total area	330 m <sup>2</sup>
Plot	7429 m <sup>2</sup>
Form of ownership	immovable
Condition	renovated
Year of construction	1969
Floor	1/7
Building material	monolithic
<b>Price range</b>	<b>3 300 € +km</b>
<b>Price per m2</b>	<b>10.00 €</b>



KATRIN KURM

Head of commercial service  
member of Estonian Chamber of Estate Agents.  
Real estate broker reg. no.: KMR 89425

+3725026897

+3726264250

katrin.kurm@kinnisvaraekspert.ee

## Additional data

alarm, air conditioner, electricity, elevator, furniture change possibility, gas stove, internet, kitchen, meeting room, ventilation, water, kitchen furniture, video cameras, separate rooms, open kitchen, city transport, street entrance, local gas heating

## Additional information

Commercial space with large display windows for rent at Toompuiestee 33A.

### BUILDING

Toompuiestee Ärimaja is a modern and unique office building on the edge of the old town. The building offers beautiful views of Toompea and Snelli Park. Easy access both by car and public transport. Nearby are Balti Jaama Market and Telliskivi Creative City.

### OFFICE SPACE

Located on the first floor of the building. The area is 380 m<sup>2</sup>, where the customer has a separate entrance to the sales hall directly from the customer parking lot. In the back are office spaces and a kitchen for employees. There is a separate entrance to the storage room. A more detailed solution is shown on the plan.

### PARKING

It is possible to rent 9 parking spaces together with the rental space for 35 euros/space.

For more information, please contact us and let's make an appointment!

\*\*\*\*

KINNISVARAEKSPERT has been operating on the Estonian market since 1993. Our offices are located in Tallinn and Pärnu, and we serve you all over Estonia. Through cooperation partners Nord Prime Capital and Alliance Group UAB, we are also represented in Latvia and Lithuania.

We offer brokerage services, valuation and real estate advisory services in both the private and commercial sectors.

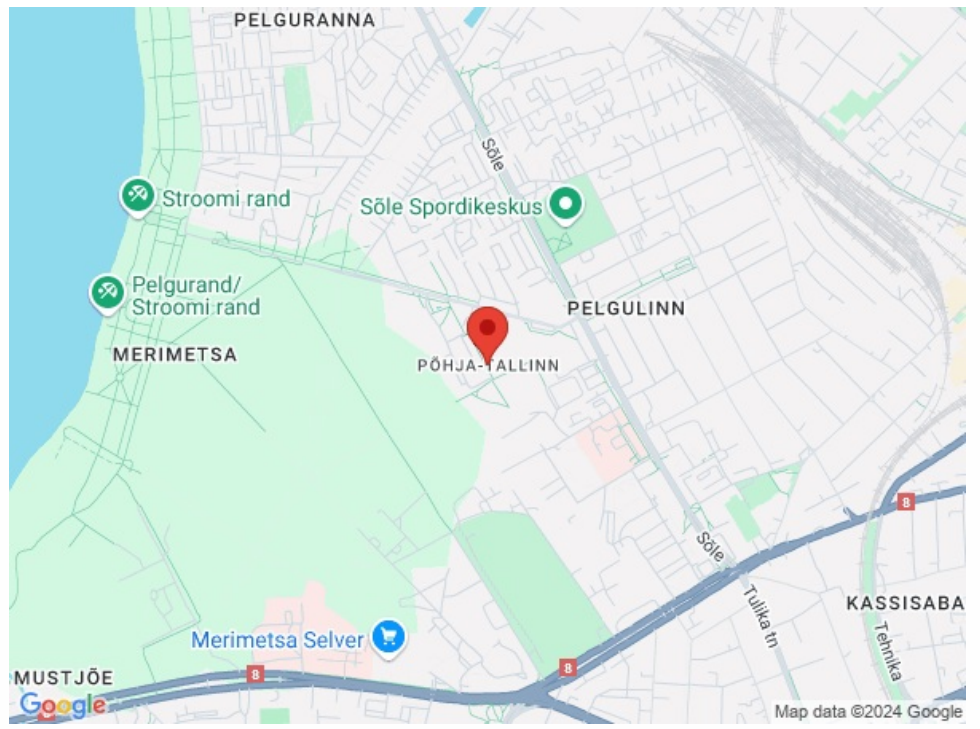
Kinnisvarekspert works closely with one of the world's largest real estate companies, Cushman & Wakefield. Our cooperation spans all over the world.

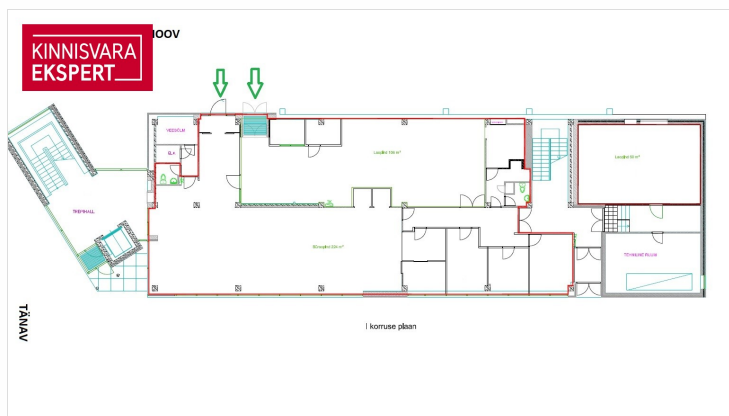
You can find more information at <http://www.kinnisvaraekspert.ee>

\*\*\*\*

## Location

📍 Harju maakond, Tallinn, Põhja-Tallinna linnaosa





**Sinu kinnisvara-partner**

**Katrin Kurm**  
+372 502 6897  
katrin.kurm@kinnisvaraekspert.ee