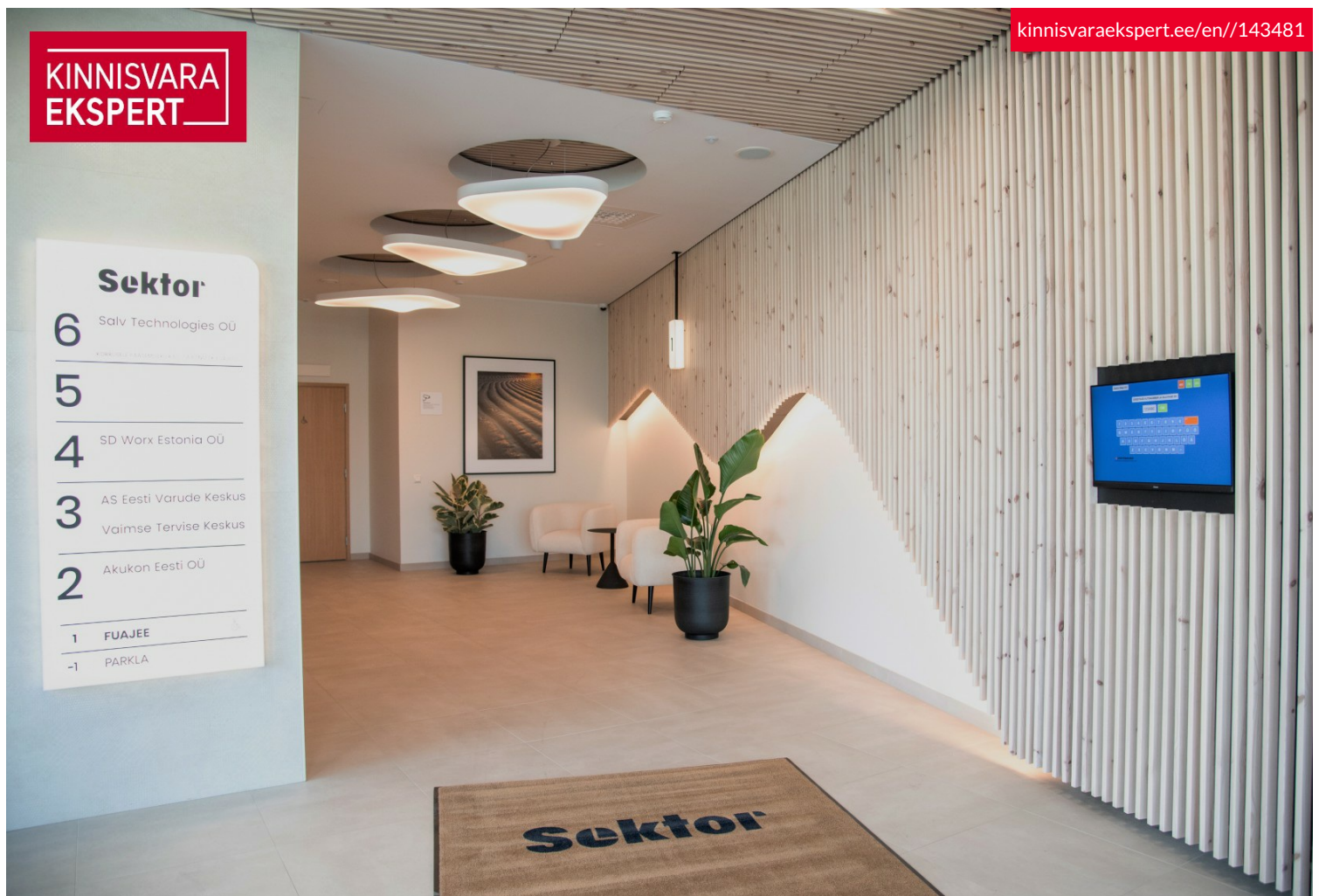


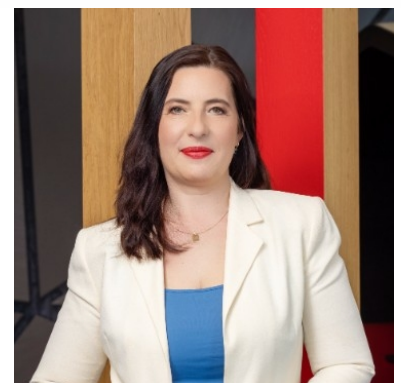
**KINNISVARA  
EKSPERT**



# Rent bureau VEERENNI 38B

 Harju maakond, Tallinn, Kesklinna linnaosa

Office space for rent in the brand new Sector building!



**KATRIN KURM**

☎ +3725026897

☎ +3726264250

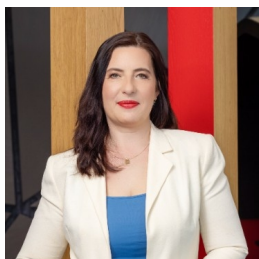
✉ [katrin.kurm@kinnisvaraekspert.ee](mailto:katrin.kurm@kinnisvaraekspert.ee)

5/6  
floor

612.8 m<sup>2</sup>  
total area

7 660 € +km  
12.50 €/m<sup>2</sup>

ID	143481
Total area	612.8 m <sup>2</sup>
Form of ownership	immovable
Condition	new building
Year of construction	2022
Floor	5/6
Price range	<b>7 660 € +km</b>
Price per m2	<b>12.50 €</b>



## KATRIN KURM

Head of commercial service  
member of Estonian Chamber of Estate Agents.  
Real estate broker reg. no.: KMR 89425  
📞 +3725026897  
📞 +3726264250  
✉️ [katrin.kurm@kinnisvaraekspert.ee](mailto:katrin.kurm@kinnisvaraekspert.ee)

## Additional data

alarm, air conditioner, electricity, elevator, furniture change possibility, internet, ventilation, water, WC separately, video cameras, new sewerage, new electric circuit, city transport, geothermic heating

## Additional information

Office space for rent with a wonderful view of Tallinn

### BUILDING

The Sektor house is the third completed building in the Ring houses complex. Attention has been paid to comfort, location and innovation.  
It is an A energy class building, which means that the utility costs are low.

### OFFICE SPACE

Office space with 612.8m2 is located on the 5th floor of the building. Two elevators lead to the office floor.  
The windows of the office offer a 360-degree view of the city, which makes the office very spacious and full of light.  
You can see a more detailed room plan in the pictures.

### ENVIRONMENT

Sektor house is located in the logistics hub of the center of Tallinn, nearby are bus and train stops and only a short walk from the heart of the city. Also there are several cafeterias, a gym and Depo store nearby.

### PARKING

It is possible to rent 15 parking spaces at the price of 40€/space. There is a bicycle parking lot, and guests can park in front of the house with a clock.

For more information, please contact us and let's make an appointment!

\*\*\*\*

KINNISVARAEKSPERT has been operating on the Estonian market since 1993. Our offices are located in Tallinn and Pärnu, and we serve you all over Estonia. Through cooperation partners Nord Prime Capital and Alliance Group UAB, we are also represented in Latvia and Lithuania.

We offer brokerage services, valuation and real estate advisory services in both the private and commercial sectors.

Kinnisvarekspert works closely with one of the world's largest real estate companies, Cushman & Wakefield. Our cooperation spans all over the world.

You can find more information at <http://www.kinnisvaraekspert.ee>

\*\*\*\*

## Location

📍 Harju maakond, Tallinn, Kesklinna linnaosa









KINNISVARA  
EKSPERT

Sinu  
kinnisvara-  
partner

30  
aastat

KINNISVARA  
EKSPERT

Katrin Kurm

+372 502 6897  
katrin.kurm@kinnisvaraekspert.ee

Usalda oma kinnisvaratehing meie hoolde

