



KINNISVARA
EKSPERT



KINNISVARA
EKSPERT



KINNISVARA
EKSPERT

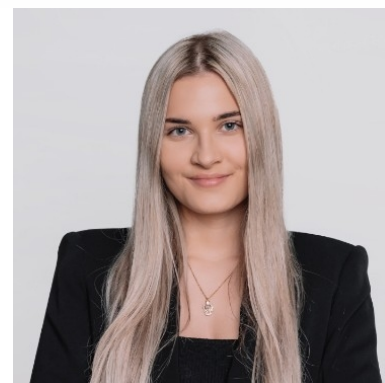


For sale apartment TIIRU 3



Pärnu maakond, Pärnu linn, Rannarajoon

OPEN HOUSE on May 3rd from 12:00 to 14:00, SHOW APARTMENTS!



KRISTEL NOVEK

+37256203454

+3724420700

kristel.novek@kinnisvaraekspert.ee

4	4/7	104.1 m ²	425 000 €
rooms	floor	total area	4 082.61 €/m ²

ID	151928
Rooms	4
Total area	104.1 m ²
Form of ownership	apartment ownership
Condition	new building
Year of construction	2025
Floor	4/7
Apartment	19
Building material	panel
Cadastral register number:	<u>62512:049:0022</u>
Price range	425 000 €
Price per m2	4 082.61 €



KRISTEL NOVEK

broker

+37256203454

+3724420700

kristel.novek@kinnisvaraekspert.ee

Additional data

balconi, electricity, elevator, locked staircase, parquet, shower, water, video cameras, closed courtyard, shop window, storage room, central heating, water floor

Additional information

OPEN HOUSE at the new apartment building at Tiiru 3 on Saturday, May 3rd, from 12:00 to 14:00. Come explore the brand-new sea-view apartments! Two tastefully furnished show apartments will also be open for viewing. Swedbank loan advisors will be present!

Seafront 4-room apartment no. 19 (104.1 m² + balcony 11.6 m²) is located on the 4th floor of the building and offers direct views of the sea and coastal meadow. The apartment features a spacious living room with kitchen (33.8 m²), three bedrooms (15.7 m²; 13.8 m²; 13.2 m² + walk-in wardrobe 4.1 m²), a shower room/WC (5.1 m² – with the option to add a sauna), a bathroom/WC (5.0 m²), and a hallway (13.4 m²). The living room has floor-to-ceiling sliding windows with access to a large south-facing balcony. Comfortable indoor climate is ensured by water-based underfloor heating and a ventilation system with heat recovery; cooling can also be added to the apartment as an extra.

The newly completed 7-storey apartment building at Tiiru 3, located in the Valgre residential area, sits right by the sea and the coastal meadow. The south- and west-facing balconies of the apartments offer breathtaking views and the perfect setting to enjoy sunset evenings. The building's exterior design also reflects Pärnu's identity as a summer resort town – white facades with large glass-railed balconies add a sense of lightness and openness.

The building features 2- to 4-room apartments, all with a balcony or terrace. Each apartment includes water-based underfloor heating, an individual ventilation unit, floor-to-ceiling windows in the seafront apartments, and high-end "Premium" interior finishes. On the ground floor, storage units are available (for an additional fee), and in the courtyard, a private gated parking lot (parking spaces for an additional fee, prepared for electric charging), a children's playground, and direct access to the seaside promenade and light-traffic trail. The apartment building was designed by architects Hanno Grossschmidt, Tomomi Hayashi, and Siim Endrikson from the HGA architecture bureau.

More information about the apartments at Tiiru 3 in Pärnu and the Valgre residential area will soon be available at <http://www.valgre.eu>.

To view apartment plans, prices, and other details, please don't hesitate to get in touch.

KINNISVARAEKSPERT has been operating on the Estonian market since 1993. Our offices are located in Tallinn and Pärnu, and we serve you all over Estonia. Through cooperation partners Nord Prime Capital and Alliance Group UAB, we are also represented in Latvia and Lithuania.

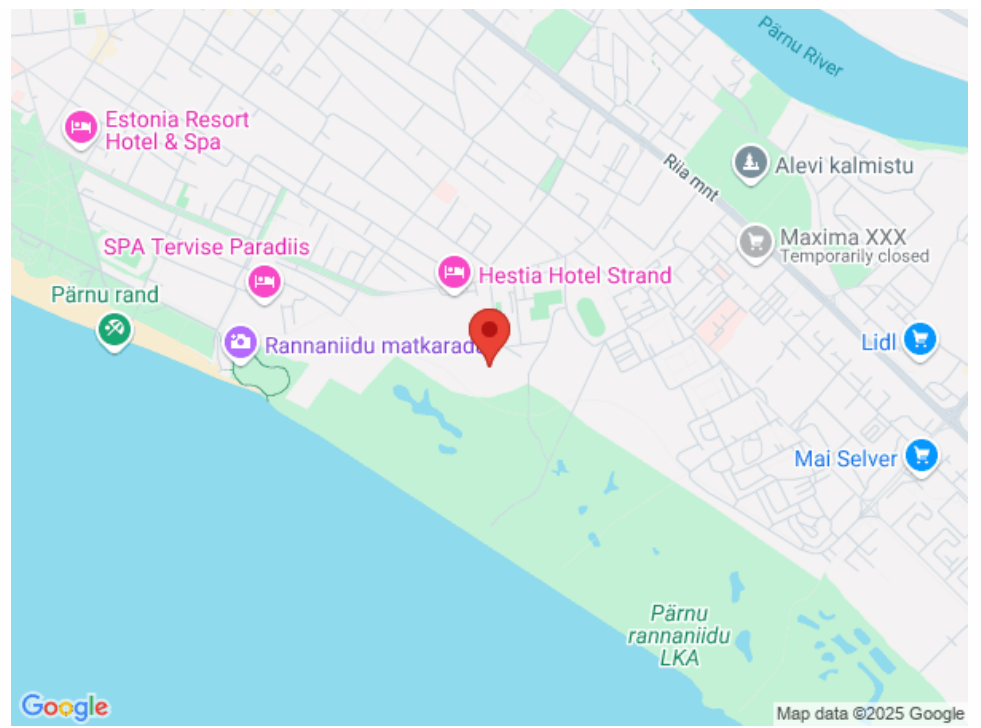
We offer brokerage services, valuation and real estate advisory services in both the private and commercial sectors.

Kinnisvarekspert works closely with one of the world's largest real estate companies, Cushman & Wakefield. Our cooperation spans all over the world.

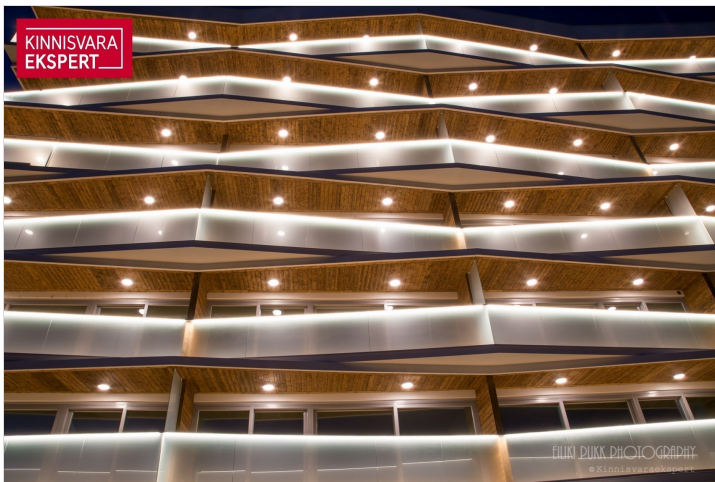
You can find more information at <http://www.kinnisvaraekspert.ee>

Location

📍Pärnu maakond, Pärnu linn, Rannarajoon







KINNISVARA
EKSPERT



KINNISVARA
EKSPERT



KINNISVARA
EKSPERT



KINNISVARA
EKSPERT



KINNISVARA
EKSPERT

