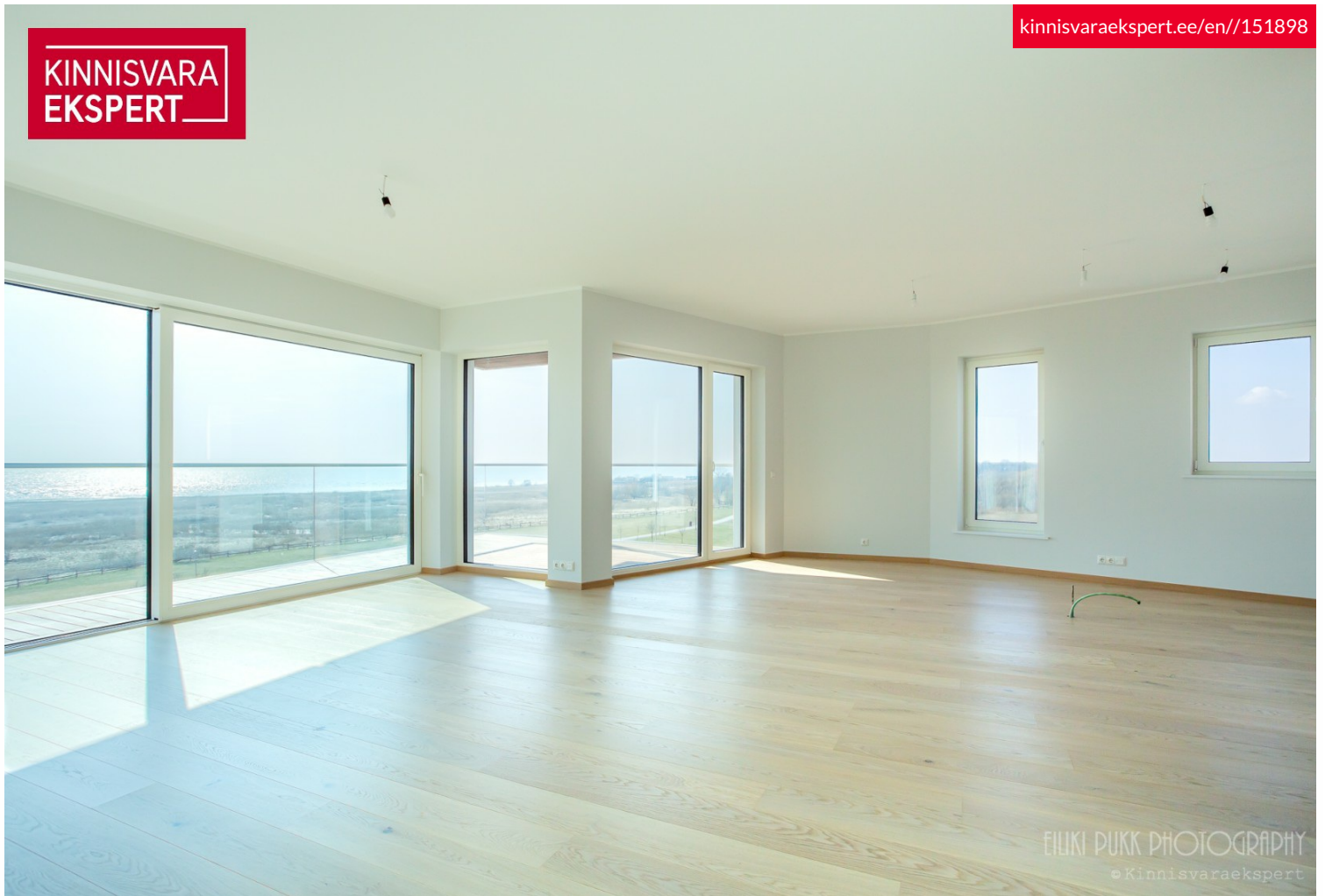


KINNISVARA
EKSPERT



EIJKI PUKK PHOTOGRAPHY
©Kinnisvaraekspert



For sale apartment TIIRU 3



Pärnu maakond, Pärnu linn, Rannarajoon

Home at the Edge of the Sea - New Seaside Apartments!



JANNO PETERSON

+3725058832

+3724420700

janno.peterson@kinnisvaraekspert.ee

| | | | |
|-------|-------|--------------------|---------------------------|
| 4 | 5/7 | 131 m ² | 615 000 € |
| rooms | floor | total area | 4 694.66 €/m ² |

| | |
|----------------------------|-----------------------|
| ID | 151898 |
| Rooms | 4 |
| Total area | 131 m ² |
| Form of ownership | apartment ownership |
| Condition | new building |
| Year of construction | 2025 |
| Floor | 5/7 |
| Apartment | 28 |
| Cadastral register number: | <u>62512:049:0022</u> |
| Price range | 615 000 € |
| Price per m2 | 4 694.66 € |



JANNO PETERSON

maakleriteenuse juht, kutseline vanemmaakler
tase 6

Eesti Kinnisvaramaaklerite Koja liige

+3725058832

+3724420700

✉ janno.peterson@kinnisvaraekspert.ee

Additional data

balconi, bath, coatroom, electricity, elevator, locked staircase, parquet, sauna, shower, water, WC separately, video cameras, open kitchen, closed courtyard, high ceilings, shop window, storage room, central heating, water floor, air conditioner

Additional information

OPEN HOUSE in the new Tiiru 3 apartment building on Saturday, May 3rd, from 12:00 to 14:00. Come and explore the brand-new sea-view apartments, including two tastefully furnished show apartments. Swedbank loan advisors will also be present!

One of the building's best apartments – a seaside penthouse-style 4-room corner apartment no. 28 (131 m² + balcony 30.6 m²) – is located on the 5th floor and offers direct views of the sea and coastal meadow. The apartment features a spacious living room-kitchen (45.8 m²), three bedrooms (18.6 m² + walk-in closet 4 m²; 14.3 m²; 13.2 m²), a large bathroom with sauna (8 m² + 2.9 m²), a separate shower/WC (4.2 m²), utility room (3.9 m²), two hallways (7 m² and 9 m²), and a separate WC. The floor-to-ceiling sliding windows in the seaside rooms lead to a large south-facing balcony. Comfortable indoor climate is ensured by water underfloor heating, heat recovery ventilation, and a cooling unit (included in the price).

The newly completed 7-story apartment building at Tiiru 3 in the Valgre residential district is located by the sea, on the edge of the coastal meadow. South- and west-facing balconies offer breathtaking views and the chance to enjoy sunsets. The building's exterior reflects Pärnu's resort town character – white facades enhanced with airy, spacious sea-facing glass balconies. The building includes 2- to 4-room apartments, all with balconies or terraces. Apartments feature water underfloor heating, their own ventilation unit, floor-to-ceiling windows on the sea side, and "Premium" interior finishes. On the ground floor: storage rooms (extra cost), a private enclosed courtyard with parking (parking space for an additional fee, includes electric connection readiness), a children's playground, and access to the seaside promenade. The architects are Hanno Grossschmidt, Tomomi Hayashi, and Siim Endrikson from HGA.

More information about the Tiiru 3 apartments in Pärnu can be found on Valgre's website: <http://www.valgre.eu>. For questions and additional information, please get in touch!

Make your dream come true and turn seaside living into reality!

KINNISVARAEKSPERT has been operating on the Estonian market since 1993. Our offices are located in Tallinn and Pärnu, and we serve you all over Estonia. Through cooperation partners Nord Prime Capital and Alliance Group UAB, we are also represented in Latvia and Lithuania.

We offer brokerage services, valuation and real estate advisory services in both the private and commercial sectors.

Kinnisvarekspert works closely with one of the world's largest real estate companies, Cushman & Wakefield. Our cooperation spans all over the world.

You can find more information at <http://www.kinnisvaraekspert.ee>

Location

📍 Pärnu maakond, Pärnu linn, Rannarajoon

