

KINNISVARA  
EKSPERT



V  
VALGRE  
ELAMURAJON



KINNISVARA  
EKSPERT

V  
VALGRE  
ELAMURAJON



KINNISVARA  
EKSPERT



KINNISVARA  
EKSPERT

## For sale apartment TIIRU 3

 Pärnu maakond, Pärnu linn, Rannarajoon

UUED MEREVAATEGA KORTERID!



KRISTEL NOVEK

☎ +37256203454

☎ +3724420700

✉ kristel.novek@kinnisvaraekspert.ee

3	3/7	65.8 m <sup>2</sup>	258 500 €
rooms	floor	total area	3 928.57 € / m <sup>2</sup>

ID	148467
Rooms	3
Total area	65.8 m <sup>2</sup>
Form of ownership	apartment ownership
Condition	new building
Year of construction	2025
Floor	3/7
Apartment	18
Building material	panel
Cadastral register number:	<u>62512:049:0022</u>
Price range	<b>258 500 €</b>
Price per m2	<b>3 928.57 €</b>



KRISTEL NOVEK

broker

+37256203454

+3724420700

kristel.novek@kinnisvaraekspert.ee

## Additional data

balconi, electricity, elevator, locked staircase, parquet, shower, water, video cameras, closed courtyard, shop window, storage room, central heating, water floor

## Additional information

\*\*\*\*

KINNISVARAEKSPERT has been operating on the Estonian market since 1993. Our offices are located in Tallinn and Pärnu, and we serve you all over Estonia. Through cooperation partners Nord Prime Capital and Alliance Group UAB, we are also represented in Latvia and Lithuania.

We offer brokerage services, valuation and real estate advisory services in both the private and commercial sectors.

Kinnisvarekspert works closely with one of the world's largest real estate companies, Cushman & Wakefield. Our cooperation spans all over the world.

You can find more information at <http://www.kinnisvaraekspert.ee>

\*\*\*\*

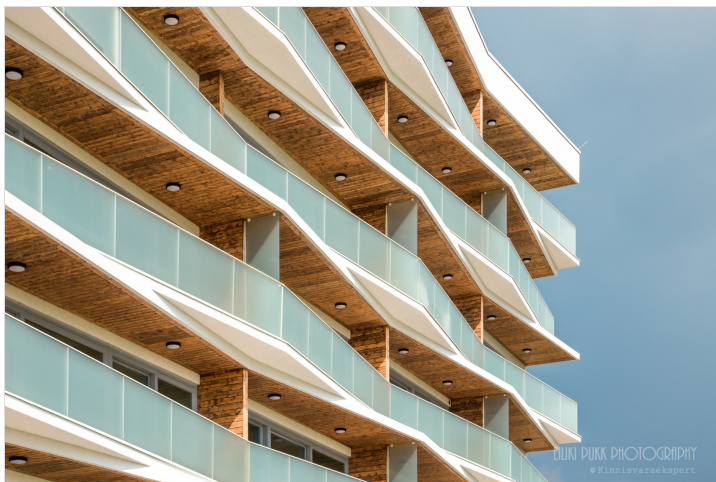
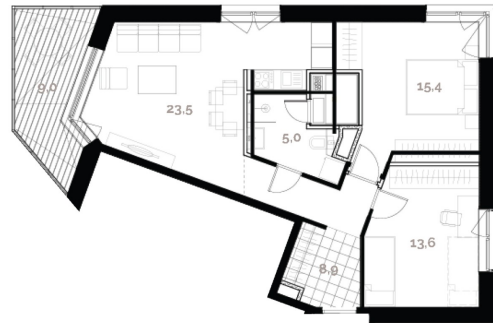
## Location

Pärnu maakond, Pärnu linn, Rannarajoon





KINNISVARA  
EKSPERT



ELIIN PUUK PHOTOGRAPHY  
@Kinnisvaraekspert

KINNISVARA  
EKSPERT



ELIIN PUUK PHOTOGRAPHY  
@Kinnisvaraekspert

KINNISVARA  
EKSPERT



KINNISVARA  
EKSPERT



V  
VALGRE  
ELAMURAJON

KINNISVARA  
EKSPERT

V  
VALGRE  
ELAMURAJON

KINNISVARA  
EKSPERT



V  
VALGRE  
ELANUMAJON