

KINNISVARA  
EKSPERT



KINNISVARA  
EKSPERT



KINNISVARA  
EKSPERT



KINNISVARA  
EKSPERT



## Rent bureau ESTONIA PST 19



Harju maakond, Tallinn, Kesklinna linnaosa

Modern commercial space for rent at Kawe City!



KATRIN KURM

+3725026897

+3726264250

katrin.kurm@kinnisvaraekspert.ee

1/7  
floor

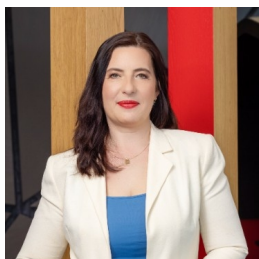
160.6 m<sup>2</sup>  
total area

3 051 € + km  
19.00 € / m<sup>2</sup>

ID	143248
Total area	160.6 m <sup>2</sup>
Form of ownership	immovable
Condition	in completion stage
Year of construction	2021
Floor	1/7
Building material	stone

Price range **3 051 € +km**

Price per m2 **19.00 €**



## KATRIN KURM

Head of commercial service  
member of Estonian Chamber of Estate Agents.  
Real estate broker reg. no.: KMR 89425

+3725026897

+3726264250

✉ [katrin.kurm@kinnisvaraekspert.ee](mailto:katrin.kurm@kinnisvaraekspert.ee)

## Additional data

alarm, air conditioner, electricity, elevator, furniture change possibility, internet, ventilation, water, video cameras, new sewerage, high ceilings, new electric circuit, city transport, central heating, water floor

## Additional information

A new office building has been completed in the heart of Tallinn by the Freedom Square - Kawe City!

### BUILDING

Office building with outstanding architecture reflecting the modern present. At the same time, the facade of the environmentally valuable house created by the architect Ernst Kühnert has been preserved as one part.

Town hall square, Solaris center and Vabadus väljak bus and tram stops are just a few minutes walk away.

### OFFICE SPACE

The offered space of 160.6m<sup>2</sup> is located on the 1st floor in the building with preserved environmental value, the windows of which open onto Tatari street.

Entrance to the surface is from the lobby of the building.

The room has a spacious layout and the wall surfaces are radiator-free. The rooms are available 24 hours a day.

Air heating and water floor heating are used as heating solutions.

### PARKING

Parking for cars and bicycles is located in the building's underground garage. There are also public parking garages and parking lots in the surrounding area.

For more information, please contact us and let's make an appointment!

\*\*\*\*

KINNISVARAEKSPERT has been operating on the Estonian market since 1993. Our offices are located in Tallinn and Pärnu, and we serve you all over Estonia. Through cooperation partners Nord Prime Capital and Alliance Group UAB, we are also represented in Latvia and Lithuania.

We offer brokerage services, valuation and real estate advisory services in both the private and commercial sectors.

Kinnisvarekspert works closely with one of the world's largest real estate companies, Cushman & Wakefield. Our cooperation spans all over the world.

You can find more information at <http://www.kinnisvaraekspert.ee>

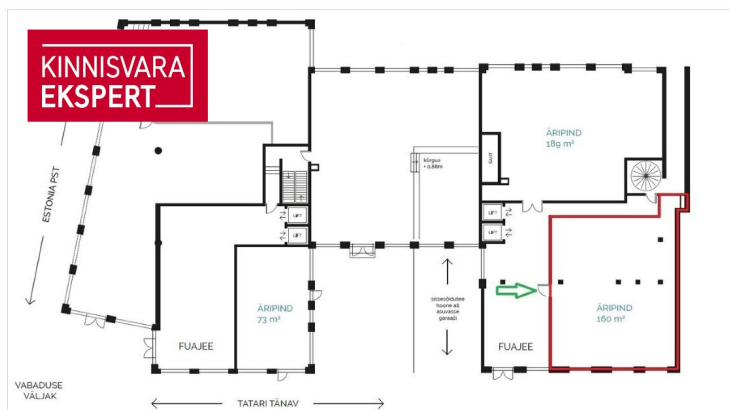
\*\*\*\*

## Location

📍 Harju maakond, Tallinn, Kesklinna linnaosa

□





KINNISVARA  
EKSPERT

Sinu  
kinnisvara-  
partner

Katrín Kúrm

+372 502 6897  
katrin.kurm@kinnisvaraekspert.ee

30 aastat  
kogemust

KINNISVARA  
EKSPERT

5