

KINNISVARA
EKSPERT



KINNISVARA
EKSPERT



KINNISVARA
EKSPERT



KINNISVARA
EKSPERT



Rent bureau TULIKA TN 19C



Harju maakond, Tallinn, Kristiine linnaosa

3 KABINETIGA 101,3M2 ÄRIPIND KRISTIINES!



ARGO VÕRK

☎ +37253433255

☎ +3726264250

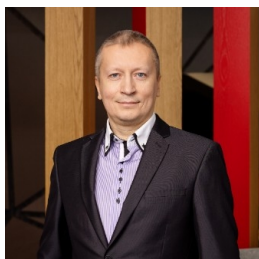
✉ argo.vork@kinnisvaraekspert.ee

4	2/5	101.3 m ²	1 522 € +km
rooms	floor	total area	15.02 € / m ²

ID	151382
Ruume	4
Total area	101.3 m ²
Condition	completed
Year of construction	2018
Floor	2/5
Building material	stone

Price range **1 522 € +km**

Price per m2 **15.02 €**



ARGO VÕRK

Broker, commercial property

Real estate broker reg. no.: KMR 98260

+37253433255

+3726264250

argo.vork@kinnisvaraekspert.ee

Additional data

alarm, air conditioner, electricity, elevator, internet, kitchen, meeting room, ventilation, water, open kitchen, high ceilings, central water, city transport, local gas heating

Additional information

For rent 101.3m2 office space with a cabinet system in the newest C-building of the Flora business district, right next to Kristiine Centre!

The rentable space has 3 offices, 2 of which are equipped with a sink, an open kitchenette and a disabled toilet. The layout of the commercial space is included in the gallery. This commercial space is also very suitable for offering medical or beauty services, or as a traditional office if a cabinet system is preferred.

The commercial space is equipped with modern technological solutions and communications. The building has electronic security.

Guests of Flora Maja have free parking on the property for up to 30 minutes if they register at the parking interface.

The Tulika Street 19 C building is a few minutes' drive from the city center. Freedom Square is 1.5 km away.

Several bus and trolley stops are located 100-200m from the building, which guarantees good access for pedestrians.

There are many places to eat near Flora Maja, including Kristiine Keskus, which is just a few minutes' walk away.

Additional costs, a deposit payable upon signing the contract, and VAT are added to the rental price.

It is possible to install a company advertisement on the facade, which is a great advertising outlet!

We also have vacant rental spaces in Flora Maja buildings A and B, which can be viewed on our website <http://www.kinnisvaraekspert.ee>

This offer is free of commission for you!

You are welcome to view the premises!

A business district with a dignified history and good aura

Flora Maja is a business district with a long history and good aura. In 2018, the historic factory buildings A and B got a new dignified neighbor, building C, where this office space is located.

Flora Maja is located next to the busy Kristiine traffic junction. That is why Flora Maja has always been popular among companies needing office, service, and retail space.

Location advantages:

- Easily accessible to the city center and other parts of the city.
- Many services in the vicinity.
- Convenient access by bus, trolleybus and train.
- Parking in the courtyard of the business district.

KINNISVARAEKSPERT has been operating on the Estonian market since 1993. Our offices are located in Tallinn and Pärnu, and we serve you all over Estonia. Through cooperation partners Nord Prime Capital and Alliance Group UAB, we are also represented in Latvia and Lithuania.

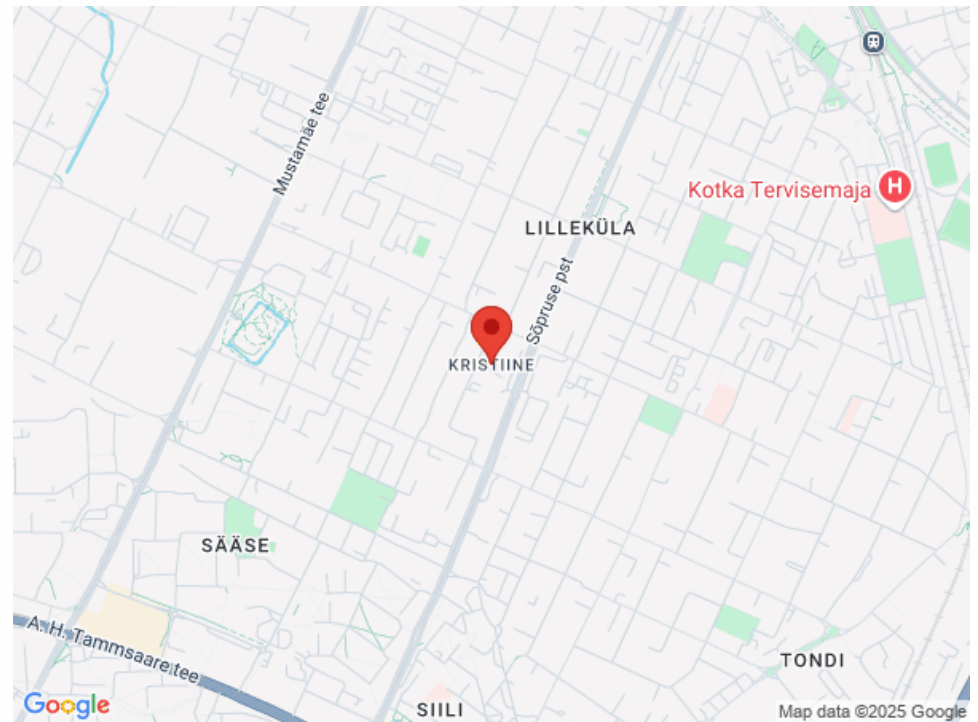
We offer brokerage services, valuation and real estate advisory services in both the private and commercial sectors.

Kinnisvarekspert works closely with one of the world's largest real estate companies, Cushman & Wakefield. Our cooperation spans all over the world.

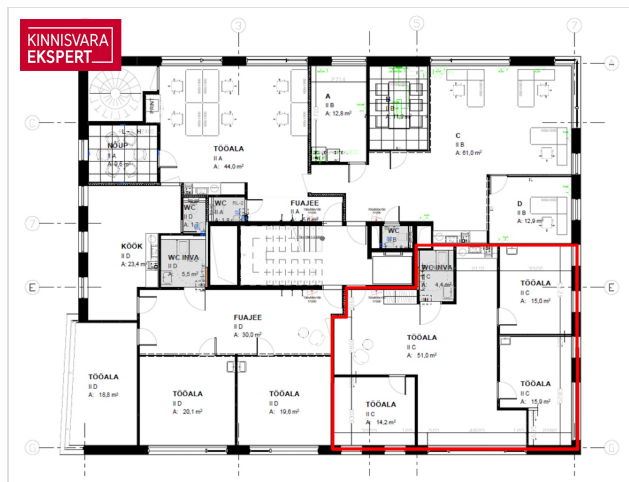
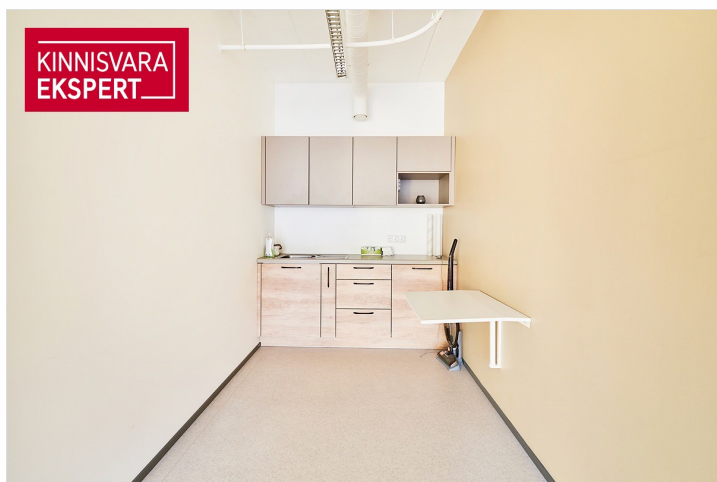
You can find more information at <http://www.kinnisvaraekspert.ee>

Location

📍 Harju maakond, Tallinn, Kristiine linnaosa









KINNISVARA
EKSPERT

Sinu
kinnisvara
müügipartner



30
aastat

KINNISVARA
EKSPERT

Argo Vörk
+372 534 33255
argo.vork@kinnisvaraekspert.ee

Usalda oma kinnisvaratehing meie hoolde