

KINNISVARA  
EKSPERT



KINNISVARA  
EKSPERT



KINNISVARA  
EKSPERT



KINNISVARA  
EKSPERT



## Rent bureau A. H. TAMMSAARE TEE 92

📍 Harju maakond, Tallinn, Mustamäe linnaosa

Office space for rent in a new building in a great location!



MEELIS PÄEREN

☎ +3725652277

☎ +3726264250

✉ meelis.paeren@kinnisvaraekspert.ee

6/8 floor	1041.8 m <sup>2</sup> total area	12 502 € +km 12.00 € / m <sup>2</sup>
--------------	-------------------------------------	--

ID	143496
Total area	1041.8 m <sup>2</sup>
Form of ownership	immovable
Condition	completed
Year of construction	2020
Floor	6/8
Building material	monolithic
<b>Price range</b>	<b>12 502 € +km</b>
<b>Price per m2</b>	<b>12.00 €</b>



## MEELIS PÄEREN

Professional broker level 5, commercial property  
Real estate broker reg. no.: KMR 61822

+3725652277

+3726264250

meelis.paeren@kinnisvaraekspert.ee

## Additional data

alarm, air conditioner, electricity, elevator, furniture change possibility, internet, kitchen, meeting room, refrigerator, shower, ventilation, water, WC separately, kitchen furniture, separate rooms, open kitchen, new sewerage, new electric circuit, city transport, central heating

## Additional information

Office space with 1041.8m2 for rent in Mauruse Maja

Mauruse Maja is a new office building at Tammsaare tee 92, which has very good parking facilities, as the entire property has a total of 520 parking spaces. There are also very good parking facilities for customers of the office building. There is also a opportunity to come to work with a bike and park it in locked area.

## OFFICE SPACE

Located on the 6th floor. The rental area includes a 380m2 terrace.

According to the project made by the interior architect, the office consists of a reception area, 2 kitchens, separate offices, 2 shower rooms, toilets and auxiliary rooms. The rest of the space is divided into open workplaces.

The area of 1041.8m2 can be seen in more detail in the pictures on a green background with a enclosed red line.

The office space is in very good condition and partially furnished, bright and with spacious views. Room-based temperature and ventilation control.

It is possible to make the rental space into smaller offices - 458,7m2 or the whole floor 1502m2

## ENVIRONMENT

Mauruse Maja is in a very good location. There is a possibility to put up the company logo on the wall of the building and with active traffic it can be easily noticed.

Nearby are many different shops and cafeterias.

For more information, feel free to contact us and come and see the office space!

\*\*\*\*

KINNISVARAEKSPERT has been operating on the Estonian market since 1993. Our offices are located in Tallinn and Pärnu, and we serve you all over Estonia. Through cooperation partners Nord Prime Capital and Alliance Group UAB, we are also represented in Latvia and Lithuania.

We offer brokerage services, valuation and real estate advisory services in both the private and commercial sectors.

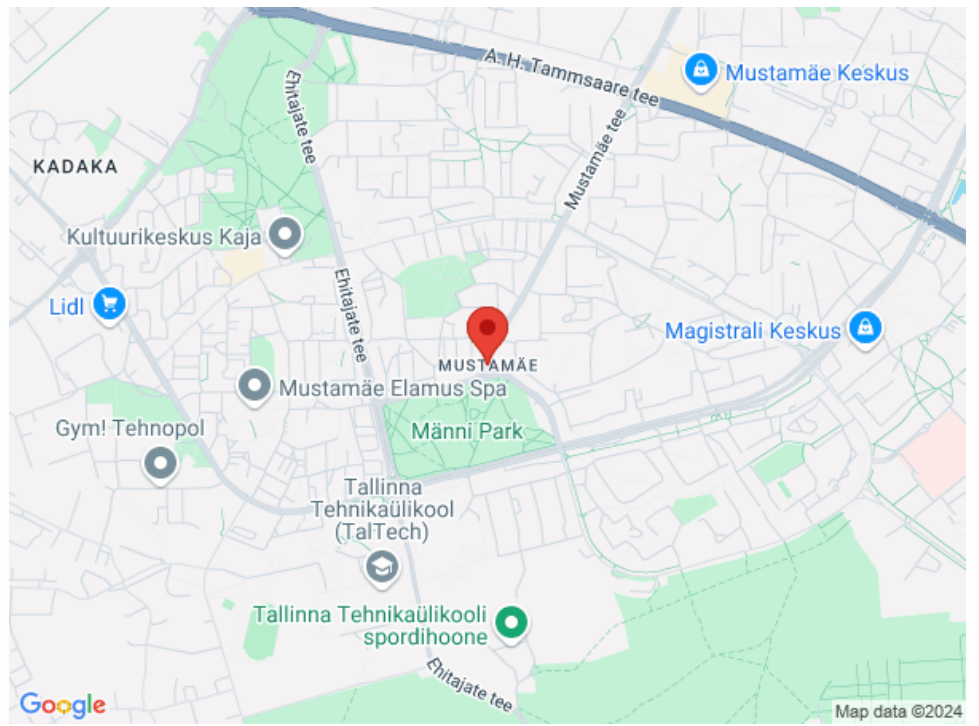
Kinnisvarekspert works closely with one of the world's largest real estate companies, Cushman & Wakefield. Our cooperation spans all over the world.

You can find more information at <http://www.kinnisvaraekspert.ee>

\*\*\*\*

## Location

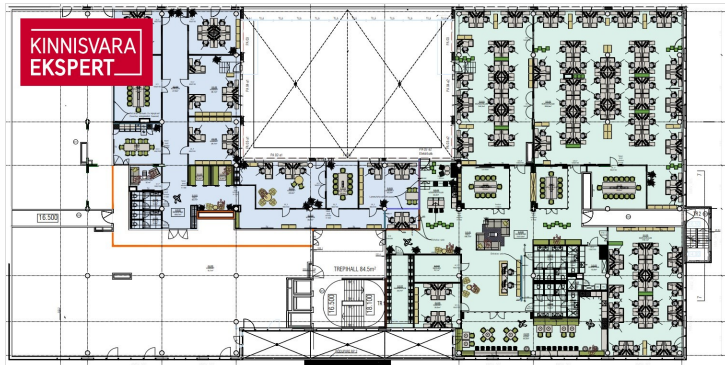
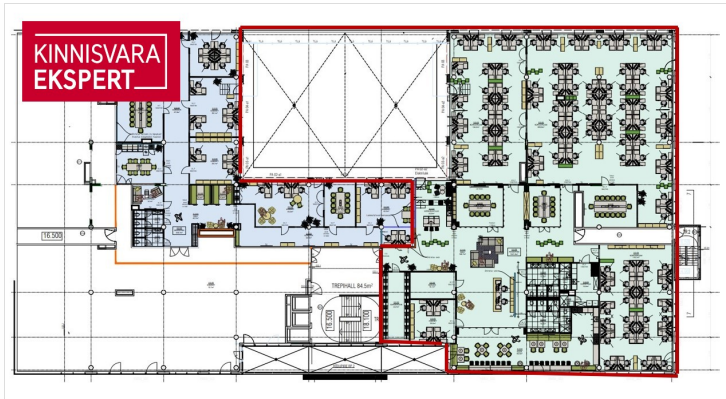
📍Harju maakond, Tallinn, Mustamäe linnaosa











KINNISVARA EKSPERT

Sinu kinnisvara-partner

**30** aastat KINNISVARA EKSPERT

**Katrin Kurm**  
+372 502 6897  
katrin.kurm@kinnisvaraekspert.ee

**Usalda oma kinnisvaratehing meie hoolde**