

KINNISVARA  
EKSPERT



KINNISVARA  
EKSPERT



KINNISVARA  
EKSPERT



KINNISVARA  
EKSPERT



## For sale trade AISA 1

📍 Pärnu maakond, Pärnu linn, Jõõpre küla

Äripind Jõõpre külas



MEELIS TAMMER

☎ +37256460010

☎ +3724420700

✉ meelis.tammer@kinnisvaraekspert.ee

1/2	390.3 m <sup>2</sup>	65 000 €
floor	total area	166.54 € / m <sup>2</sup>

ID	146902
Total area	390.3 m <sup>2</sup>
Form of ownership	apartment ownership
Condition	requires repair
Year of construction	1975
Floor	1/2
Building material	stone
Cadastral register number:	<u>15902:001:0049</u>

Price range **65 000 €**

Price per m2 **166.54 €**



MEELIS TAMMER

broker

+37256460010

+3724420700

meelis.tammer@kinnisvaraekspert.ee

## Additional data

electricity, industrial electricity, water, electric stove

## Additional information

\*\*\*\*

KINNISVARAEKSPERT has been operating on the Estonian market since 1993. Our offices are located in Tallinn and Pärnu, and we serve you all over Estonia. Through cooperation partners Nord Prime Capital and Alliance Group UAB, we are also represented in Latvia and Lithuania.

We offer brokerage services, valuation and real estate advisory services in both the private and commercial sectors.

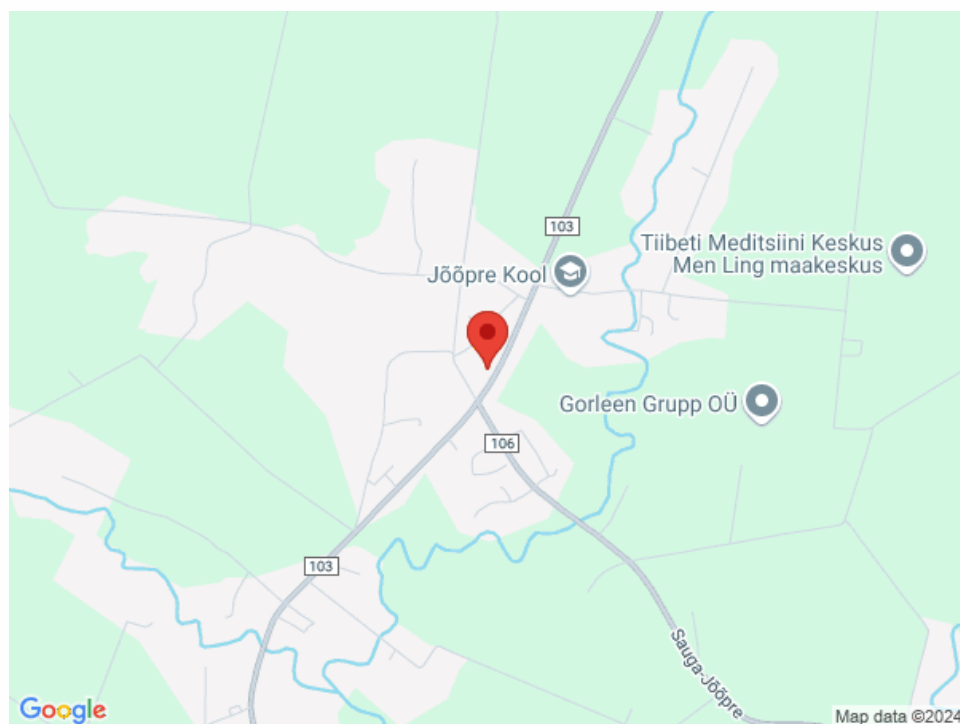
Kinnisvarekspert works closely with one of the world's largest real estate companies, Cushman & Wakefield. Our cooperation spans all over the world.

You can find more information at <http://www.kinnisvaraekspert.ee>

\*\*\*\*

## Location

Pärnu maakond, Pärnu linn, Jööpre küla





KINNISVARA  
EKSPERT



KINNISVARA  
EKSPERT



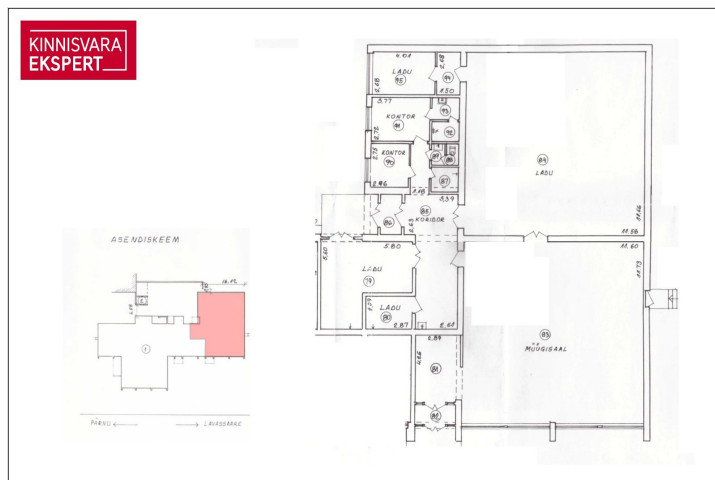
KINNISVARA  
EKSPERT



KINNISVARA  
EKSPERT



KINNISVARA  
EKSPERT

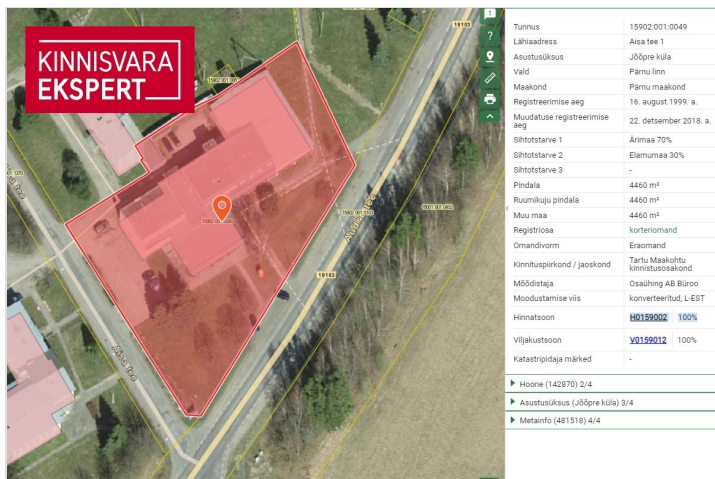


KINNISVARA  
EKSPERT



KINNISVARA  
EKSPERT

Vaade lõunast



KINNISVARA  
EKSPERT

Tunnus	15902.001.0049
Lähiaadress	Aisa tee 1
Asustusüksus	Jõõpre küla
Vald	Pärnu linn
Maakond	Pärnu maakond
Registreerimise aeg	16. august 1999. a.
Muudatuse registreerimise aeg	22. detsember 2018. a.
Sihotstarve 1	Arimaa 70%
Sihotstarve 2	Elamumaa 30%
Sihotstarve 3	-
Pindala	4460 m <sup>2</sup>
Ruumikuju pindala	4460 m <sup>2</sup>
Muu maa	4460 m <sup>2</sup>
Registritüüp	korterimand
Omandivorm	Eramand
Kinnituspirkond / jaoskond	Tartu Maakohus kinnistusosakond
Möödistaja	Osahing AB Büroo
Moodustamise viis	konverteeritud, L,EST
Hinnatsoon	H0159002 100%
Viljaklustoon	V0159012 100%
Katatripidaja märked	-

- Hoone (142870) 2/4
- Asustusüksus (Jõõpre küla) 3/4
- MetaInfo (481518) 4/4