



# Rent bureau HOBUJAAMA 4

📍 Harju maakond, Tallinn, Kesklinna linnaosa

FLEXIBLE OFFICE SPACE ON FLEXIBLE TERMS



KATRIN KURM

☎ +3725026897

☎ +3726264250

✉ [katrin.kurm@kinnisvaraekspert.ee](mailto:katrin.kurm@kinnisvaraekspert.ee)

1 rooms	2/3 floor	10 m <sup>2</sup> total area	350 € +km 35.00 € / m <sup>2</sup>
------------	--------------	---------------------------------	---------------------------------------

ID	146396
Ruume	1
Total area	10 m <sup>2</sup>
Form of ownership	immovable
Condition	renovated
Year of construction	2007
Floor	2/3
Building material	stone
Price range	<b>350 € +km</b>
Price per m2	<b>35.00 €</b>
Deposit	<b>350 €</b>
Ettemaks	<b>350 €</b>



## KATRIN KURM

Head of commercial service  
member of Estonian Chamber of Estate Agents.  
Real estate broker reg. no.: KMR 89425

+3725026897

+3726264250

✉ [katrin.kurm@kinnisvaraekspert.ee](mailto:katrin.kurm@kinnisvaraekspert.ee)

## Additional data

electricity, elevator, furniture, internet, kitchen, meeting room, shower, water, kitchen furniture, open kitchen, high ceilings, city transport, street entrance, central heating

## Additional information

### FLEXIBLE SPACE ON FLEXIBLE TERMS

Possible to choose on different size, location and terms office solutions:

**HOT DESK**- A workspace in the open coworking area. Perfect for flexible, innovative businesses and freelancers

**DEDICATED DESK** - A workspace set up in a specific spot in the open coworking area. Perfect for small teams and freelancers.

**PRIVATE OFFICE** - Highly professional work environment. Perfect for businesses valuing privacy, networking options, staffed reception and support.

**MEETING ROOMS** - A variety of meeting rooms for smaller appointments or bigger meetings and workshops.

### LOCATION

Workland Hobujaama is located on a fifth floor of the modern A-class office building in the heart of Tallinn. Easy access, all major transport links are located just by the building Port, airport, bus and train station all within less than 10-minute drive The centre is open during the office hours from 9-17.30 on Mon-Fri for guests and 24/7 for members.

- Fully furnished workspace with plug-and-play solutions.
- Safe space and secure access.
- A variety of private offices in various sizes.
- Two meeting rooms and several phone booths.
- Fully stocked kitchen and convenient break out areas.

### Modern workspace & amenities

Workland Hobujaama provides a modern and high-quality working environment, you'll have plenty of opportunities for networking as well as privacy for focused, uninterrupted work.

- meeting rooms
- printing
- postal/courier services
- office supplies
- catering
- snack store
- shower
- video conference equipment
- professional and social events
- 24/7 access
- storage/lockers
- office library
- fiber optic internet
- support team
- fully equipped kitchen
- free coffee/tea
- common areas, lounge
- daily cleaning
- security
- networking possibilities
- supportive community
- location hopping

Ask for more information and you are welcome to visit!

\*\*\*\*

KINNISVARAEKSPERT has been operating on the Estonian market since 1993. Our offices are located in Tallinn and Pärnu, and we serve you all over Estonia. Through cooperation partners Nord

Prime Capital and Alliance Group UAB, we are also represented in Latvia and Lithuania.

We offer brokerage services, valuation and real estate advisory services in both the private and commercial sectors.

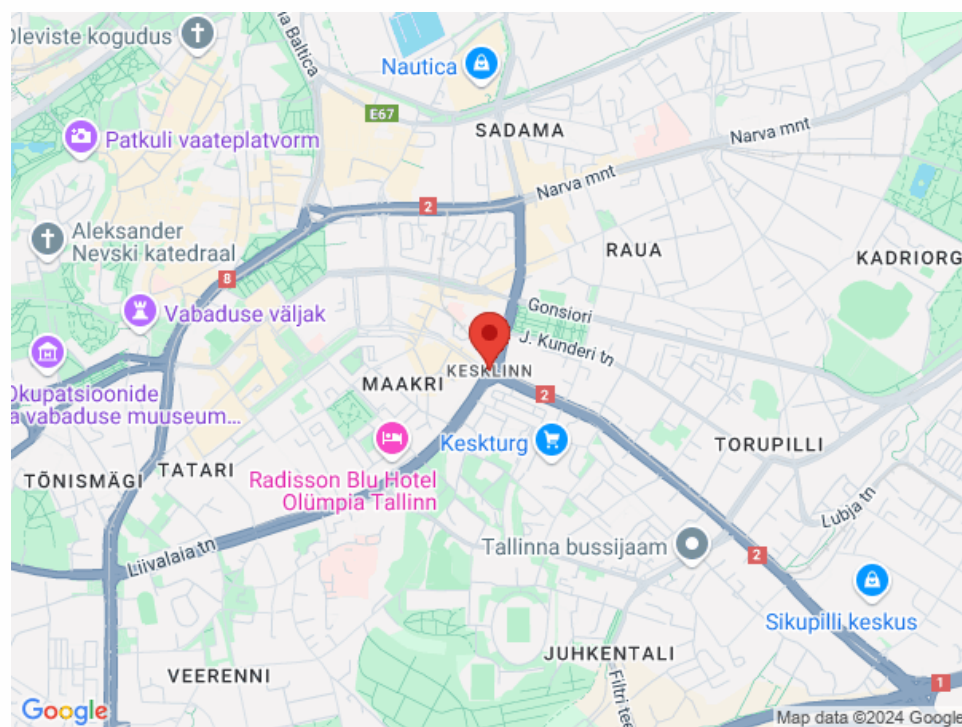
Kinnisvarekspert works closely with one of the world's largest real estate companies, Cushman & Wakefield. Our cooperation spans all over the world.

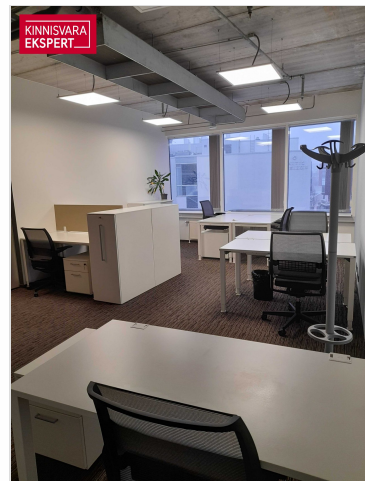
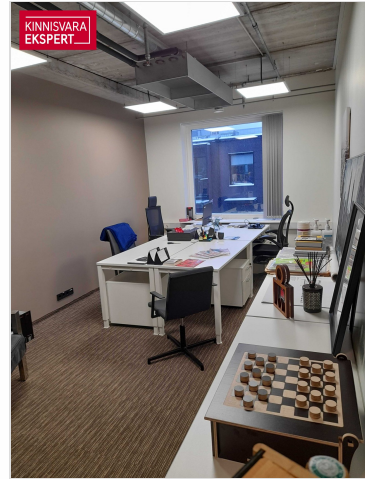
You can find more information at <http://www.kinnisvaraekspert.ee>

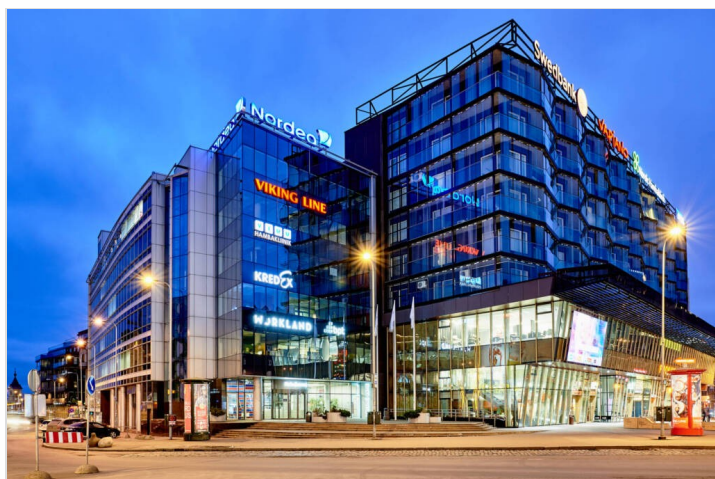
\*\*\*\*

## Location

📍 Harju maakond, Tallinn, Kesklinna linnaosa







**KINNISVARA EKSPERT**

**Sinu kinnisvara-partner**



**Katrin Kurm**  
+372 502 6897  
katrin.kurm@kinnisvaraekspert.ee

 **KINNISVARA EKSPERT** 