

**KINNISVARA
EKSPERT**



**KINNISVARA
EKSPERT**



**KINNISVARA
EKSPERT**



**KINNISVARA
EKSPERT**

**Rent warehouse
PRIISLE 18**

📍 Harju maakond, Tallinn, Lasnamäe linnaosa

ÄRIPIND PRIISLE ÄRIPARGIS, ESIMENE AASTA KÕRVALKULUD ÜÜRIHINNAS!



KATRIN KURM

☎ +3725026897

☎ +3726264250

✉ katrin.kurm@kinnisvaraekspert.ee

1/1 floor	259.2 m ² total area	2 462 € +km 9.50 € / m ²
--------------	------------------------------------	--

ID	151582
Total area	259.2 m ²
Form of ownership	immovable
Condition	new building
Year of construction	2022
Floor	1/1
Apartment	12
Cadastral register number:	<u>78403:308:0042</u>

Price range **2 462 € +km**

Price per m2 **9.50 €**



KATRIN KURM

Head of commercial service
member of Estonian Chamber of Estate Agents.
Real estate broker reg. no.: KMR 89425

+3725026897

+3726264250

katrin.kurm@kinnisvaraekspert.ee

Additional data

õhksoojuspump, alarm, electricity, industrial electricity, kitchen, meeting room, shower, ventilation, water, video cameras, separate entrance, high ceilings, ancillary building, city transport, shop window, street entrance, air conditioner

Additional information

KINNISVARAEKSPERT has been operating on the Estonian market since 1993. Our offices are located in Tallinn and Pärnu, and we serve you all over Estonia. Through cooperation partners Nord Prime Capital and Alliance Group UAB, we are also represented in Latvia and Lithuania.

We offer brokerage services, valuation and real estate advisory services in both the private and commercial sectors.

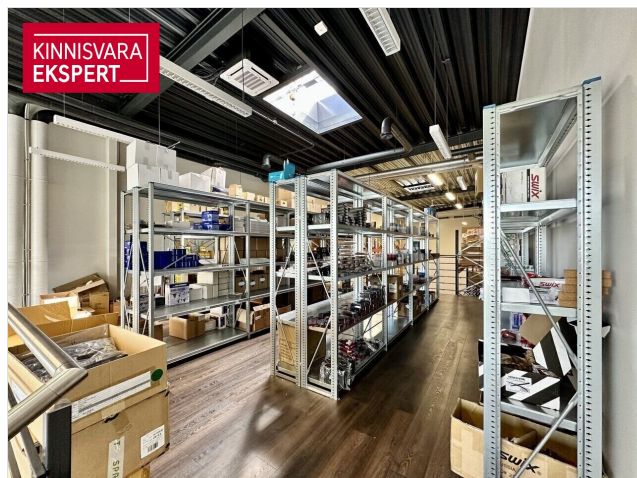
Kinnisvarekspert works closely with one of the world's largest real estate companies, Cushman & Wakefield. Our cooperation spans all over the world.

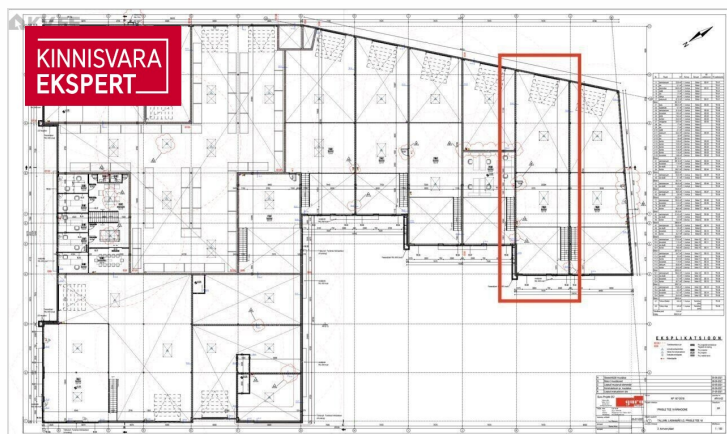
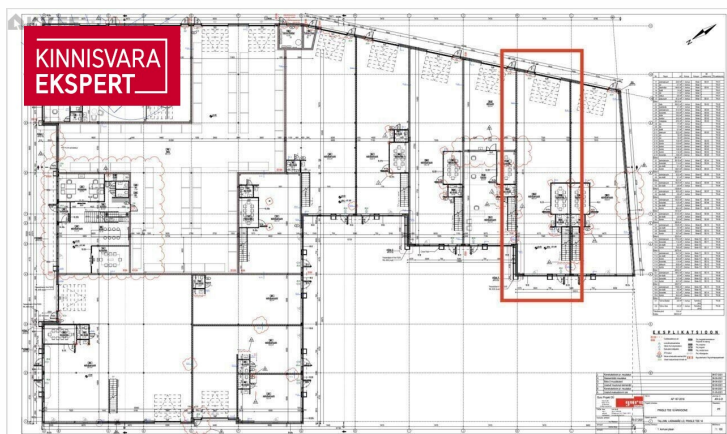
You can find more information at <http://www.kinnisvaraekspert.ee>

Location

📍Harju maakond, Tallinn, Lasnamäe linnaosa







KINNISVARA EKSPERT

Sinu kinnisvara-partner





KINNISVARA EKSPERT

Katrin Kurm

+372 502 6897
katrin.kurm@kinnisvaraekspert.ee