

KINNISVARA
EKSPERT



KINNISVARA
EKSPERT



KINNISVARA
EKSPERT



KINNISVARA
EKSPERT



Rent warehouse PRIISLE 10

📍 Harju maakond, Tallinn, Lasnamäe linnaosa

LAOPIND PRIISLE ÄRIPARGIS KOOS ESINDUSRUUMI JA KONTORIGA



KATRIN KURM

☎ +3725026897

☎ +3726264250

✉ katrin.kurm@kinnisvaraekspert.ee

1/1
floor

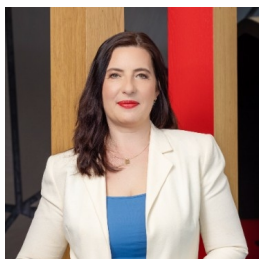
565.8 m²
total area

4 186 € +km
7.40 € / m²

ID	151567
Total area	565.8 m ²
Form of ownership	immovable
Condition	new building
Year of construction	2016
Floor	1/1
Cadastral register number:	<u>78403:308:0042</u>

Price range **4 186 € +km**

Price per m2 **7.40 €**



KATRIN KURM

Head of commercial service
member of Estonian Chamber of Estate Agents.
Real estate broker reg. no.: KMR 89425

+3725026897

+3726264250

✉ katrin.kurm@kinnisvaraekspert.ee

Additional data

õhksoojuspump, alarm, electricity, industrial electricity, kitchen, shower, ventilation, water, video cameras, separate entrance, high ceilings, ancillary building, city transport, shop window, street entrance, air conditioner

Additional information

KINNISVARAEKSPERT has been operating on the Estonian market since 1993. Our offices are located in Tallinn and Pärnu, and we serve you all over Estonia. Through cooperation partners Nord Prime Capital and Alliance Group UAB, we are also represented in Latvia and Lithuania.

We offer brokerage services, valuation and real estate advisory services in both the private and commercial sectors.

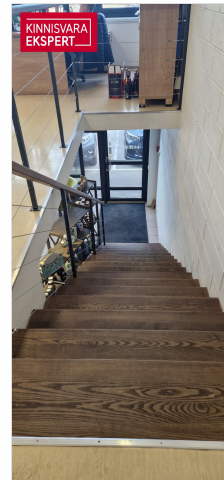
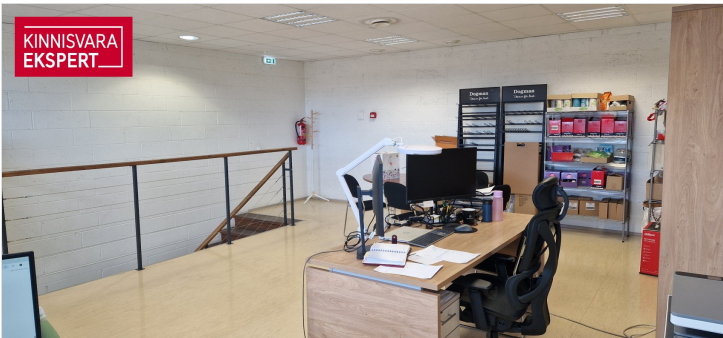
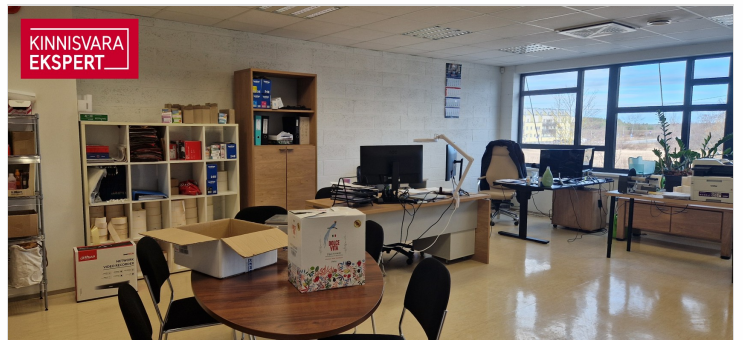
Kinnisvarekspert works closely with one of the world's largest real estate companies, Cushman & Wakefield. Our cooperation spans all over the world.

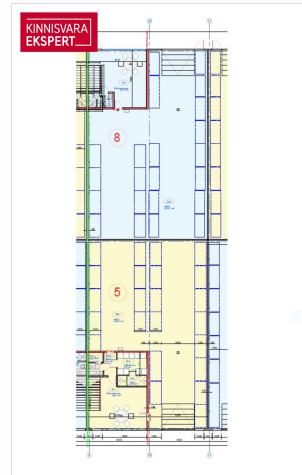
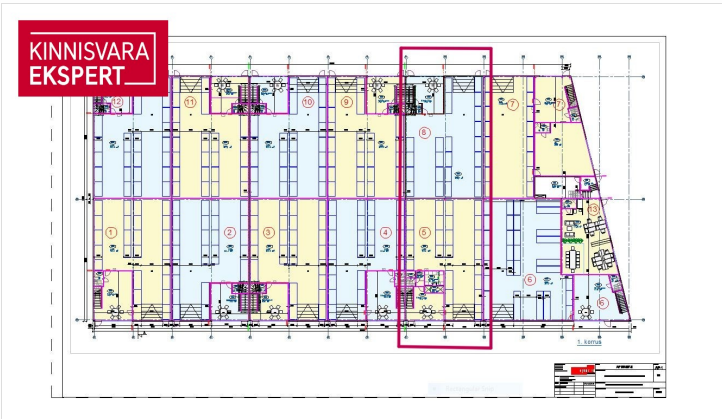
You can find more information at <http://www.kinnisvaraekspert.ee>

Location

📍 Harju maakond, Tallinn, Lasnamäe linnaosa









KINNISVARA EKSPERT

Sinu kinnisvara-partner

Katrin Kurm
+372 502 6897
katrin.kurm@kinnisvaraekspert.ee

 **KINNISVARA EKSPERT** 

A professional portrait of a woman with dark hair, wearing a white blazer over a blue top. The background is dark with a vertical red stripe on the right. The text 'Sinu kinnisvara-partner' is written in white. Below the portrait, there is a grey bar with the name 'Katrin Kurm', a phone number '+372 502 6897', and an email address 'katrin.kurm@kinnisvaraekspert.ee'. At the bottom left of the grey bar, there are two logos: a '30 aastat kogemust' logo and the 'KINNISVARA EKSPERT' logo. At the bottom right, there is a circular logo with a house icon.