



# Rent warehouse PRIISLE 10

📍 Harju maakond, Tallinn, Lasnamäe linnaosa

LAOPIND PRIISLE ÄRIPARGIS KOOS ESINDUSRUUMI JA KONTORIGA



KATRIN KURM

☎ +3725026897

☎ +3726264250

✉ [katrin.kurm@kinnisvaraekspert.ee](mailto:katrin.kurm@kinnisvaraekspert.ee)

1/1  
floor

291.7 m<sup>2</sup>  
total area

2 400 € +km  
8.23 € / m<sup>2</sup>

ID	151572
Total area	291.7 m <sup>2</sup>
Form of ownership	immovable
Condition	new building
Year of construction	2016
Floor	1/1
Apartment	5
Building material	monolithic
Cadastral register number:	<u>78403:308:0042</u>
Price range	<b>2 400 € +km</b>
Price per m2	<b>8.23 €</b>



KATRIN KURM

Head of commercial service  
member of Estonian Chamber of Estate Agents.  
Real estate broker reg. no.: KMR 89425

+3725026897

+3726264250

katrin.kurm@kinnisvaraekspert.ee

## Additional data

õhksoojuspump, alarm, electricity, industrial electricity, kitchen, shower, ventilation, water, video cameras, separate entrance, high ceilings, ancillary building, city transport, shop window, street entrance, air conditioner

## Additional information

\*\*\*\*

KINNISVARAEKSPERT has been operating on the Estonian market since 1993. Our offices are located in Tallinn and Pärnu, and we serve you all over Estonia. Through cooperation partners Nord Prime Capital and Alliance Group UAB, we are also represented in Latvia and Lithuania.

We offer brokerage services, valuation and real estate advisory services in both the private and commercial sectors.

Kinnisvaraekspert works closely with one of the world's largest real estate companies, Cushman & Wakefield. Our cooperation spans all over the world.

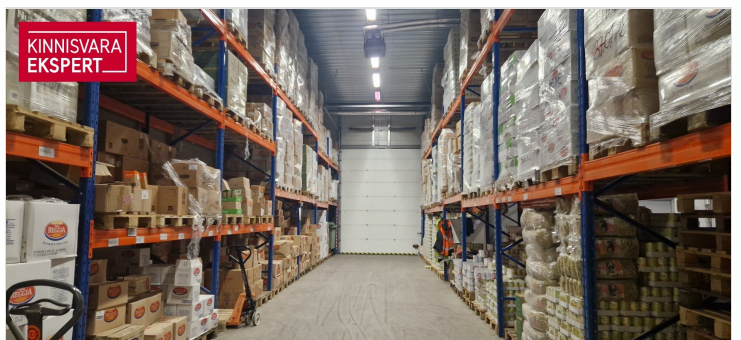
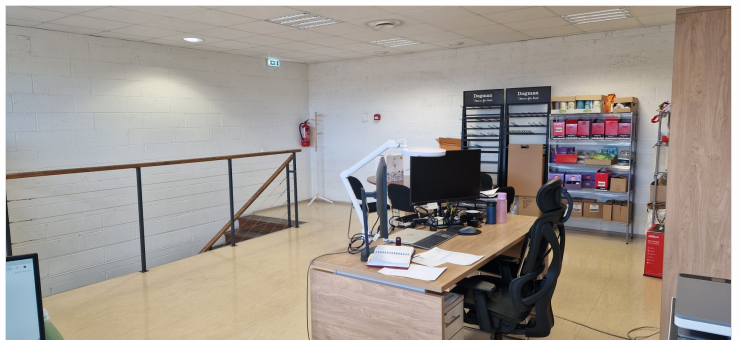
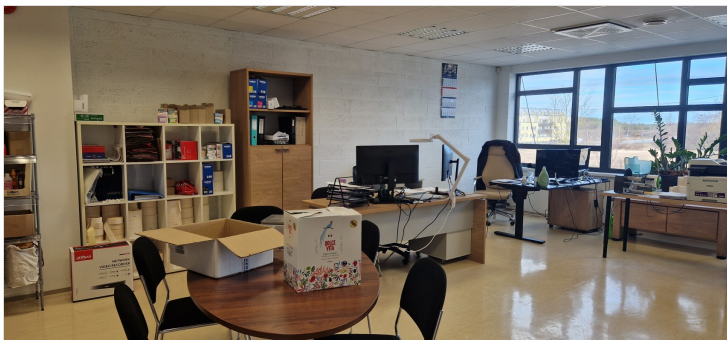
You can find more information at <http://www.kinnisvaraekspert.ee>

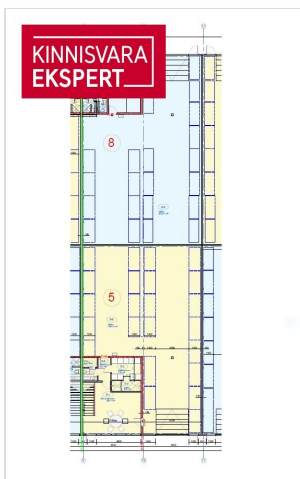
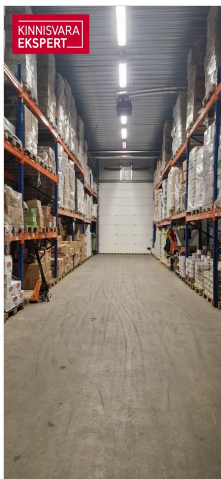
\*\*\*\*

## Location

📍Harju maakond, Tallinn, Lasnamäe linnaosa







KINNISVARA  
EKSPERT

Sinu  
kinnisvara-  
partner

Katrin Kurm  
+372 502 6897  
katrin.kurm@kinnisvaraekspert.ee

KINNISVARA  
EKSPERT